

User Manual

TViX HD M-7000A



All specifications and information are subject to changes without further notices.

Safety Notice



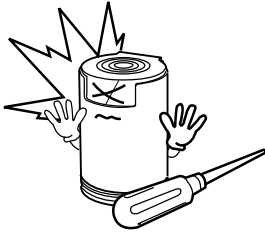
Keep your TViX Kit away from heated areas, such as direct sunlight exposure, heaters etc. Place it in well ventilated location. Ensure that a free airflow is maintained around the appliance.



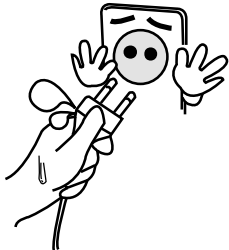
Do not set the TViX up in places that are exposed to oil, water, dust, humidity or rain and wind.



Place all magnetized devices. Such as speakers away from the TViX Kit .It may erase or cause damage to the data stored in the hard disk.



Do not try to disassemble or remodel the TViX kit. Doing so may cause malfunction or fire.



Do not touch the power plug with wet hands or use defective power cables & electric outlets. It may cause electric shocks or fire.



Do not drop the TViX Kit from heights. Doing so may cause critical damage to the hard drive.

The socket-outlet shall be installed near the equipment and shall be easily accessible.

Usage Precautions

Please read the following usage precautions before using your TViX HD.

- Make sure the power is off when you connect the A/V cable between the TViX and the TV.
- When cleaning the TViX product, pull out the power cord and then wipe it with a soft piece of dry cloth.
- When connected to the computer through the USB cable the TViX HD acts as an external USB storage device (In this state, there is no video/audio output displayed on the TV Screen a USB ON icon will be displayed on the center of the TV screen and on the VFD. it will be display as USB ON). For normal TViX play mode, disconnect the USB cable connected between computer and TViX
- When detaching the HDD, Power off the TViX Kit. Let it heat out sufficiently.
- The supplied cables and accessories are recommended for customized best performance of the TViX HD. Using other cables or accessories may not provide best performance.
- If you want to unplug the device, press the return button to 'Unplug or Eject Hardware'.
- Windows 98 SE and Windows ME does not support NTFS file format. However, NTFS file format is available on Windows 2000/XP. "Primary Partition" is recommended when creating two or more partitions with a single hard disk drive.
- If you choose FAT32 file format on Windows 2000/XP, the drives maximum size will be limited to 32GBs. If you want to use a single drive letter of 32GBs or more, you have to format on Windows 98SE/ME.
- The certification sticker mark is on the bottom of the device.
- You can insert the characters using remote-numeric key. Numeric key 1 when pressed successively changes as @ → : → / → _ → -.
- We don't have any warranty or responsibility for broken hard disk. We recommend to backup periodically.

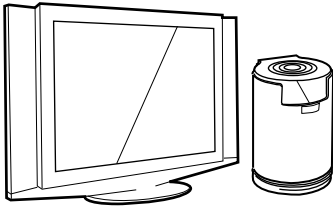
** Some functions will require you to update the latest firmware in first.

Table of Contents

Safety Notice	2
Usage Precautions.....	3
1 Introduction.....	5
1.1 Multimedia Player	5
1.2 Audio Player	6
1.3 External Storage	6
1.4 Specifications	7
2 Name of Each Part.....	8
2.1 Unit Control	8
2.2 Front VFD.....	8
2.3 Cable Connection	9
2.4 Package Contents	9
3 Installation and Connection.....	10
3.1 Video Connection	10
3.2 Audio Connection	12
3.3 HDD Installation/Exchange	13
3.4 Initial Setting.....	15
4 TViX HD Setup Menu	16
4.1 Audio/Video Setting	16
4.2 MISC Setting	18
4.3 Network Setting	19
5 Easy Usage of TViX HD.....	20
5.1 Making an HDD Folder	20
5.2 Play Video Files	21
5.3 Play Audio Files	22
5.4 Play Image Files	23
6 Using the remote control	24
6.1 Basic Functions	24
6.2 Descriptions of Each Buttons	25
6.3 Extra Features	32
6.4 LAN Connection	37
7 Firmware Upgrade.....	54
8 Using USB Connection with the PC.....	56
8.1 Windows 98SE Driver Installation	56
8.2 Making a Partition and Formatting the HDDs under Windows 98SE / ME	59
8.3 Making a Partition and Formatting the HDDs under Windows 2000 / XP/VISTA.....	61
8.4 Unplug or Eject Hardware	63
9 Appendix - Technical Terms	64
10 GNU General Public License	66

1 Introduction

1.1 Multimedia Player



TViX HD is a standalone, multimedia hard disk player which plays digital videos, digital music, digital still images and DVD files to a TV display and home entertainment system. You can enjoy digital contents in your living room without having to burn discs or having to play it back on a DVD or CD player anymore.



TViX HD plays back DVD movies with the full functionality of DVD navigation. You can create your own virtual DVD library by storing your personal collection of DVDs in .ISO or .IFO format and watch them exactly as if they were running from the original DVDs (all original features included: Menu, Chapter, Audio Stream, Subtitle, Fast Forward, Rewind, Slow, Pause, Step Forward, Repeat, Search etc.).



TViX HD plays back high definition video (up to 1920x1080P) and still images. Pre-recorded HDTV programs from a digital TV set-top box or personal digital video contents taken by a HDV™ camcorder can be played back with the TViX HD on a high definition display. The TViX HD features a HDMI connector and component, which will match the high resolution of HD level video contents.



Using the latest SMP8635 processor, TViX HD supports the latest multimedia formats MKV, MPEG-4 AVC(H.264), VC-1(MP@HL, AP@L3), WMV9 & WMV HD as well as MPEG4 3.11,4.0 , 5.0. H.264 is a brand-new and superb compression technology today. Stunning HD movie effect is obtained with lower storage capacity.



HDMI provides unparalleled qualities to digital video and audio, while DVI only serves digital video. You don't have to mess around with several AV cables. It provides single, pure and simple way to connect your display. It can deliver uncompressed digital video up to 1080p as well as multi-channel digital audio.



TViX HD supports DTS hardware decoder to mix DTS sound into 2 channels for a more dynamic sound quality.



The TViX HD can be networked with a PC system using its built-in LAN port. You are able to navigate to a PC file through TViX HD's wired or wireless network and play the file from its original destination without having to copy it into the TViX first. We're supporting the file copy via LAN.



With two USB2.0 host ports, you can now attach additional external USB hard drives to further extend the storage capacity. You can also playback files from a digital camera, USB flash driver, USB flash card reader, or a MP3 player.

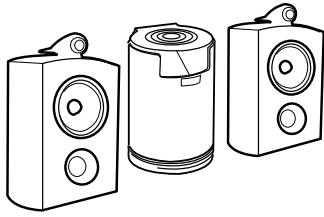


Manufactured under license from Dolby Laboratories.

"Dolby" and the double-D symbol are trademarks of Dolby Laboratories.

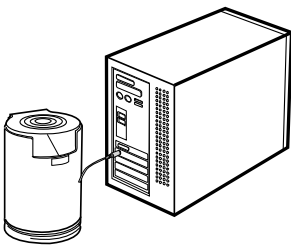
** For the further functions, please refer to following FAQ- <http://www.tvix.co.kr/eng/faq>

1.2 Audio Player



- TViX HD can play a variety of audio files such as FLAC, MP3, Ipod, AAC/M4A, Ogg Vorbis or WMA (Windows Media Audio) through the TV speaker and any other audio systems. You can listen to your favorite music files nonstop, by organizing a custom winamp playlist. Now you can enjoy music all day without changing CDs.
- TViX supports the internet radio of shoutcast streaming format (.pls,.m3u).
- You can watch picture slideshows with the option of background music (supports Simultaneous playback of Audio and picture images).

1.3 External Storage



- If you connect to a USB 1.1 port, the TViX HD will work at USB 1.1 speed, so we strongly recommend that you use USB 2.0.
- It can be used as an external device by connecting it to the System, to save video, audio, image files, data, program backups etc.
- USB 2.0 enables TViX HD to become as an external storage device which supports speed up to 480Mbit/s.
- It supports Plug & Play, so Windows will automatically recognize TViX HD the instant it is connected to the system
- If you connect the USB Cable between the system and TViX. During playback , then on VFD it will be displayed as USB ON. When you disconnect the USB, you do not have to reboot the TViX HD for continuous use.
- If you are a Windows98SE user, you should download a USB storage driver from our website www.tvix.co.kr before you connect your TViX HD with your system. You do not need to install a driver in Windows ME/2000/XP.
- You can download latest NetShare Software from our website www.tvix.co.kr/Eng before you configure NFS network. If you select to NFS mode, you can play the TP or DVD jukebox without stutter.

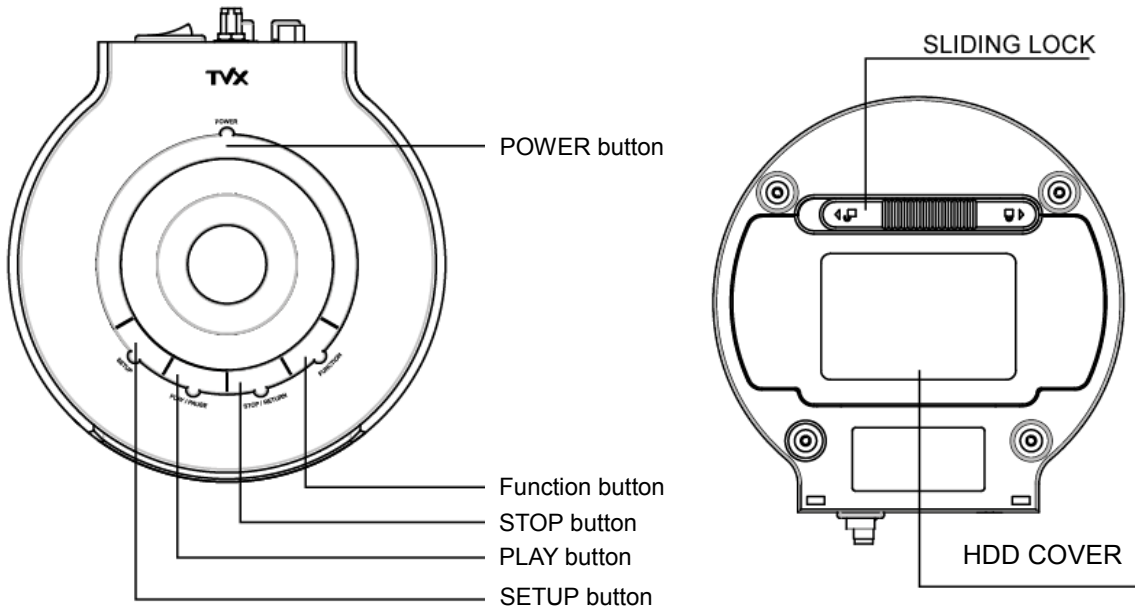
1.4 Specifications

Main Chipset	Sigma Design SMP8635
VFD Display	7 Alpha-Numeric Character 5 Digit Numeric Display
Video	Format : .wmv, .avi, .mpg, .vob, .mp4, .asf, .tp, .trp, .IFO, .ISO, .m2t,.m2ts, .mov(H.264) Codec : MPEG 1 / 2 / 4, AVI, XVID, WMV9(MP@HL), H.264/ AVC(HD), VC-1(MP@HL, AP@L3), MKV Resolutions up to 1920*1080P
Audio	MP3, WMA, AAC, Ogg, PCM, AC3, M4A, FLAC, WAV, WAV(DTS), wave pack, .APE DTS Pass Through and Down Mixing
Photo	JPEG (Progressive JPEG not Support)
Connectivity	USB2.0 Host 2 Ports USB2.0 Target 1 Port LAN
AV In / Out	Video HDMI 1.3(Video 24 bit), Component, S-Video, Composite Audio Digital : Coaxial, Optical, Analog: Stereo Optional DTV Tuner Port
File Formats	NTFS, FAT32(S-ATA HDD only, supports S-ATA 1,2) DTV Recording : 7200rpm, NTFS
Subtitle	Text Subtitle : smi, sub, srt, lrc, txt Image Subtitle : sub (with idx)
Hard Disk	SATA HDD only (SATA I, SATA II HDD)
ODD Support	Through USB 2.0 Host
Language	English, French, German, Spanish, Italian, Swedish, Czech, Russian, Japanese, Chinese, Korean
FAN	40mm Brushless FAN
FAN Control	Temperature Sensing, Variable Speed
RAM	256 Mbyte
Internal Power	90~250V Free Voltage, , 50/60Hz, 50W
Shape	Cylindrical
Dimension	131mm (Diameter) 185mm (Height)
Weight	1,200g (without HDD) 1,800g (with HDD)

2 Name of Each Part

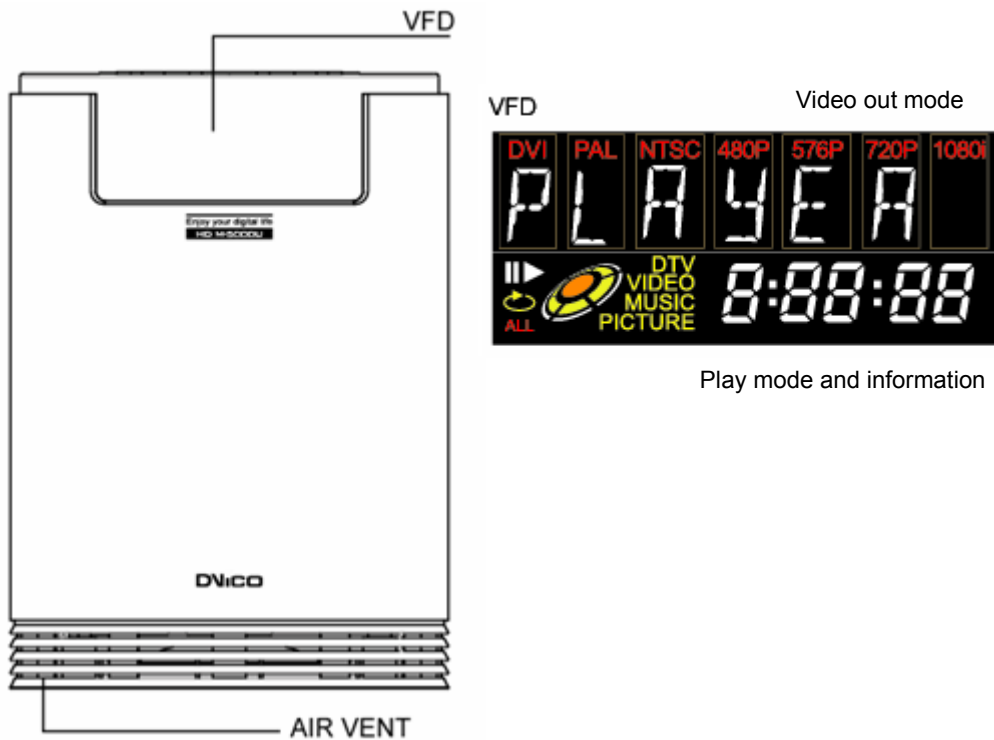
2.1 Unit Control

Basic functions can be done without the remote control.



2.2 Front VFD

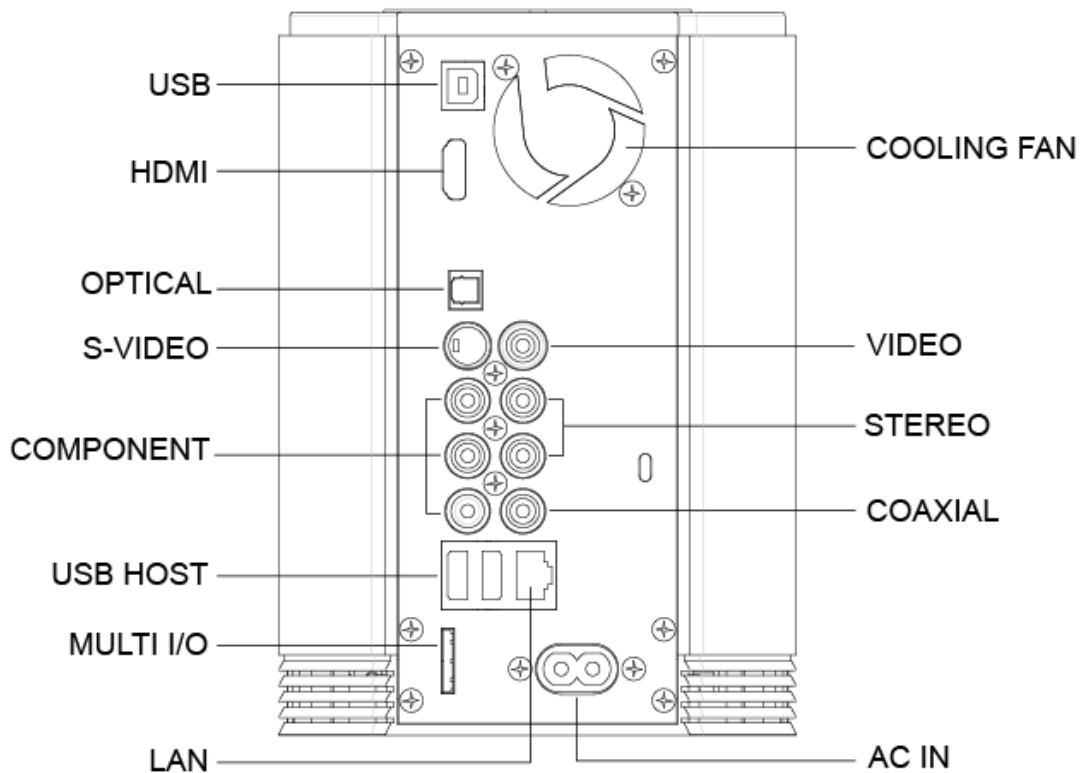
Information will be displayed on the VFD.



VFD displays current Folder/File name while navigation. Due to display(VFD) restriction we presently support only English alphabets.

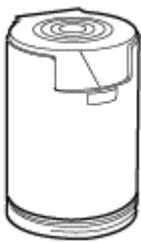
2.3 Cable Connection

You can connect the TViX kit to a TV display or audio Amplifier using the A/V cable.



There is detail instruction for tuner box on the quick guide of optional tuner box package.

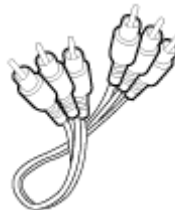
2.4 Package Contents



TViX HD M-7000A



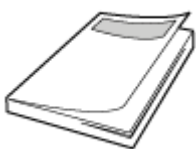
Remote Control



A/V Cable



HDMI Cable



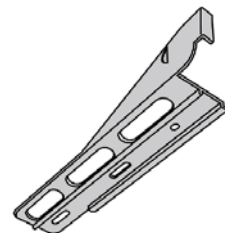
Manual



Power cable



USB Cable



HDD Guide

3 Installation and Connection

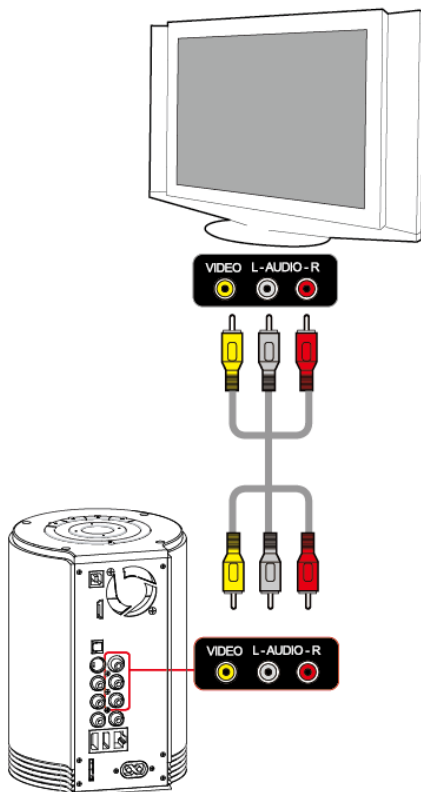
3.1 Video Connection

We support HDMI, Component, S-Video, Composite video output for connecting to the TV and each output needed to be chosen and Selected on the settings menu, depending on the cable used.

The highest quality expected by the cables used is in the following order:

HDMI > Component > S-Video > Composite.

Connection with an Ordinary (Composite cable) TV Output

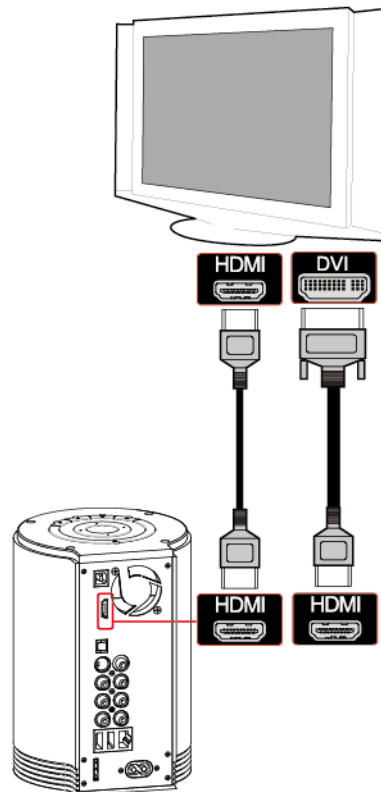


Connect the TViX Kit HD and your TV. Using the Composite (yellow) video cable.

Turn on the TViX kit and the TV. On the SET UP Menu. Select Video input mode as composite on your TV display, until you get the initial TViX HD screen.

For the Audio, please connect the stereo cable (red,White cable).

Connection to HDMI Output

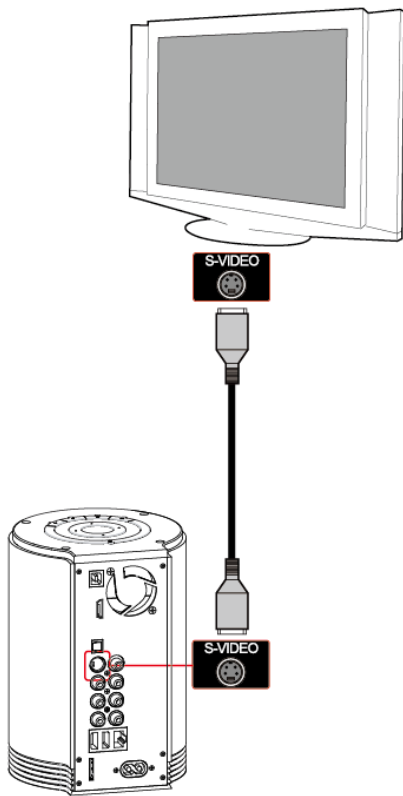


Connect the TViX kit along with the HD and your TV. By using the HDMI cables.

TViX plays back high definition video (up to 1920x1080P) by using HDMI cables.

HDMI cable can transmit uncompressed audio and Video signals together. No additional cables required for audio

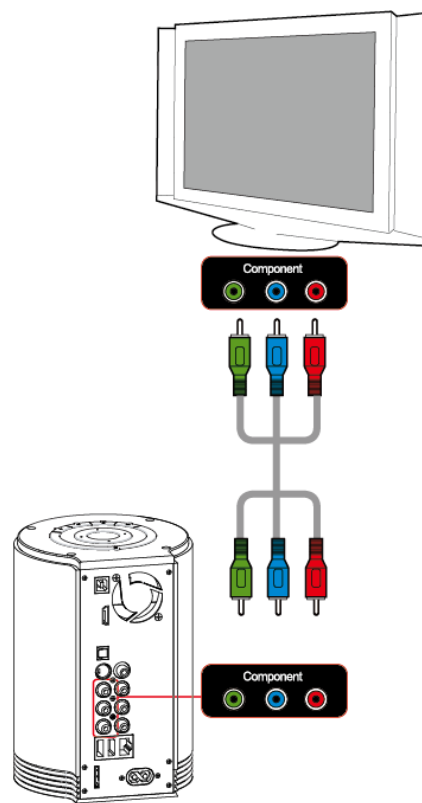
Connection to S-Video Output



Connect the TViX kit and your TV using the S-Video cable.

Turn on the TViX Kit and the TV. On the SET UP Menu, select video input mode as S-Video on your TV display until you get the initial TViX HD screen. Additional cables required for audio. (The S-Video cable is not included and has to be purchased separately.)

Connection to Component Output



Connect the TViX kit and your TV. By using the component cables.

Turn on the TViX Kit and the TV. On the SET UP Menu, select video input mode as Component on your TV display by changing setup menu (in this case, the Component input mode). Additional cables are required for audio.

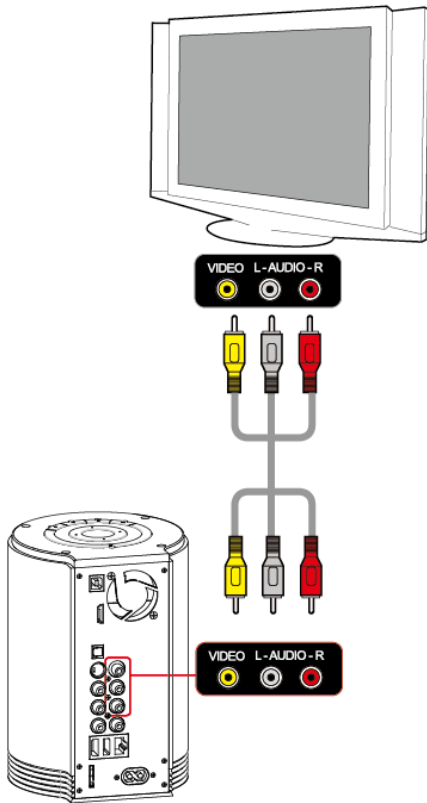
CAUTION

After you connect the video cable to your TV, press the TV Out button repeatedly on your remote control until you get the initial TViX screen.

* The component or S-Video cable is not included in the TViX and must be purchased separately.

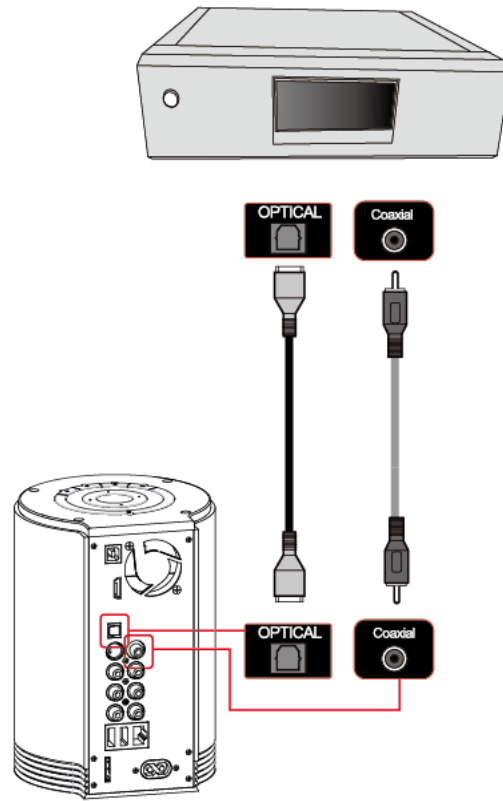
3.2 Audio Connection

Connection to 2 CH Normal TV



Connect the audio cables from the left (white) and right (red) of TViX to the appropriate terminal of your TV or Hi - Fi system for sound output.

Connection to 5.1CH Amplifier (Digital)



If you have a multi-channel decoder/amplifier with an optical/coaxial input, you can enjoy 5.1 CH high quality sound through the coaxial or optical cables. The illustration in Below shows where to connect the coaxial cable.

Optical cable connection is also done in a similar method as shown below.

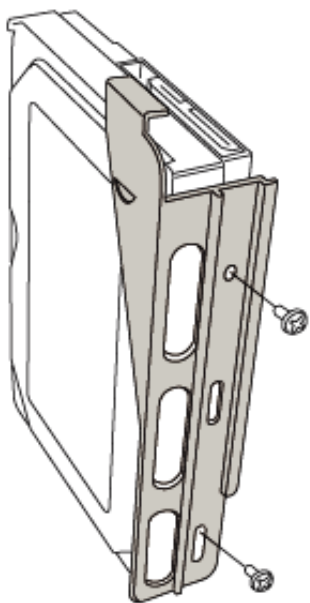
(These cables are not included in the package and must be purchased separately.)

CAUTION

If no sound is audible after connecting the Optical or Coaxial Cable, you have to change the audio setup of TViX to Digital on the SET UP menu.

3.3 HDD Installation/Exchange

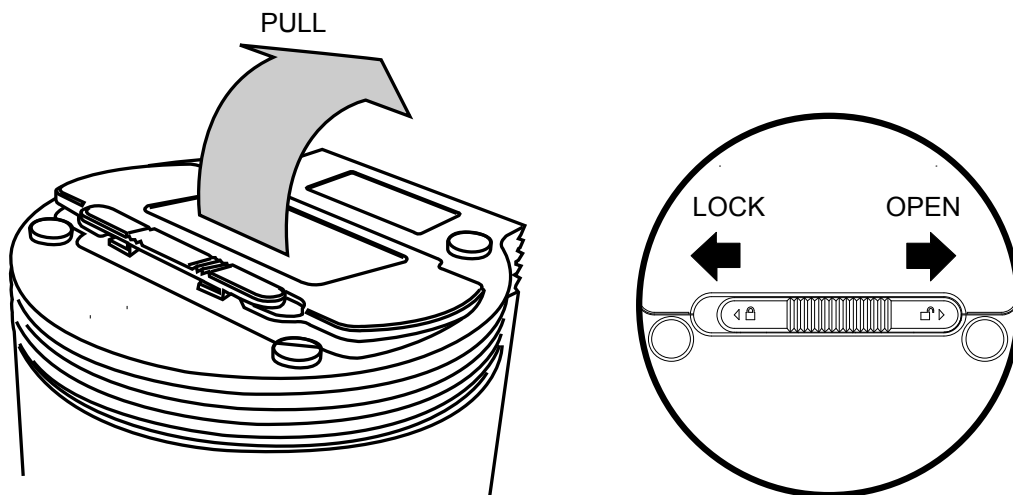
Warning: If you change the HDD of a TViX with another HDD, the warranty will be voided.



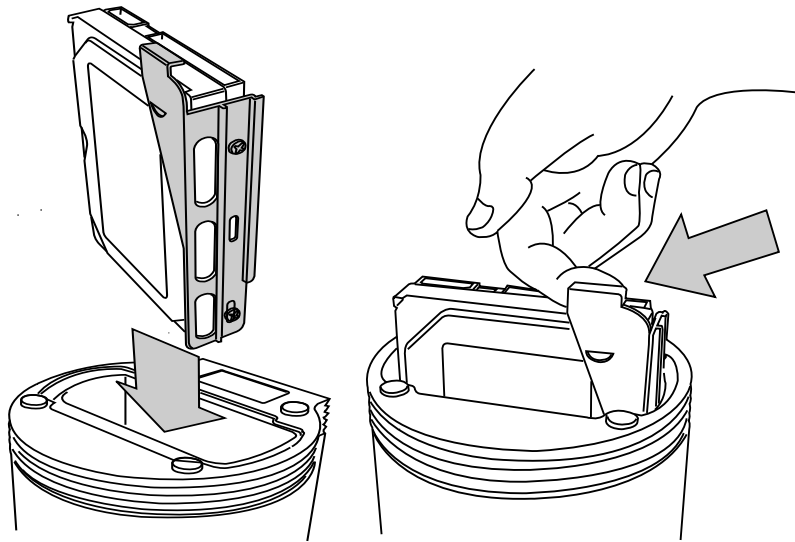
1 Assembling the TViX HD is very easy. Just follow the instructions below:

Use a Screwdriver and Tighten the Bolts by attaching the guide board to the Hard disk.

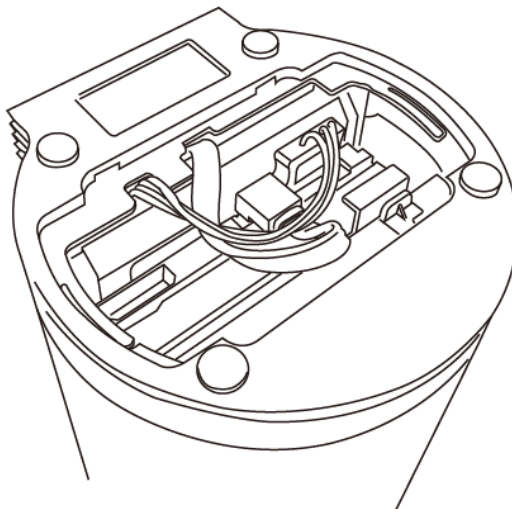
2 Open the cover case in the direction of the arrow.



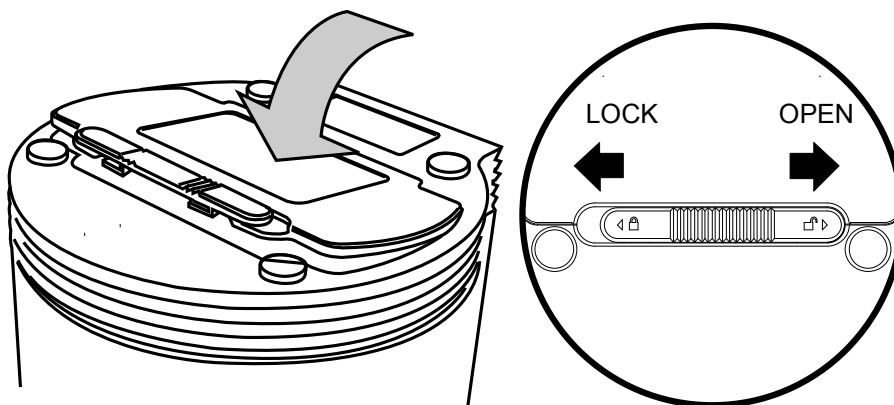
3 Place the HDD in the TViX HD board.



4 Connect the power cable and the DATA cable. When inserting the HDD, take precautions to protect the DATA cable from being damaged. Connect the cable to cross direction



5 Close the case by pushing the cover towards the direction of the arrow and then lock it.



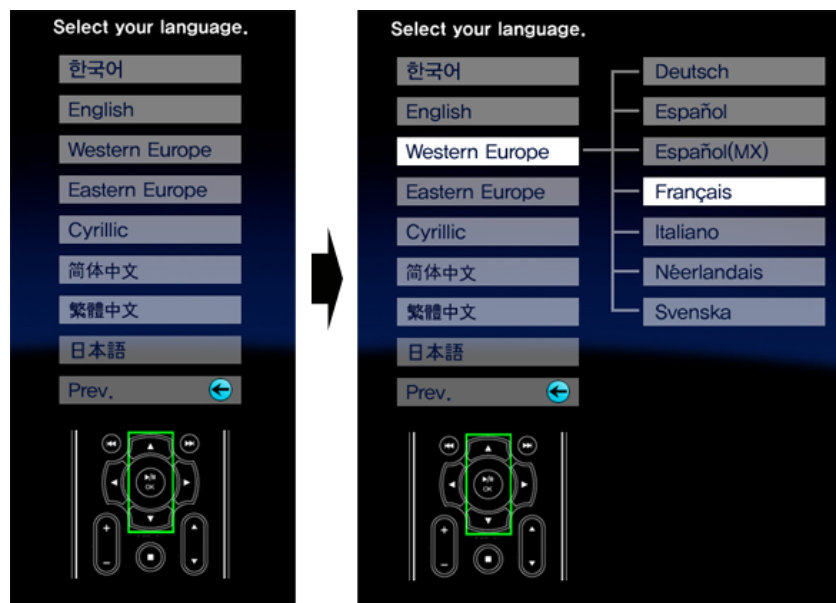
3.4 Initial Setting

1 Connect the TViX Kit with HD to your TV using the Cable and then turn on the TViX HD.

2 On the TV Display . Press OK button then user can see the TViX Logo as shown below.



3 Then User can Select the preferred language from the Screen displayed as shown below



4 TViX SETUP screen will be displayed.



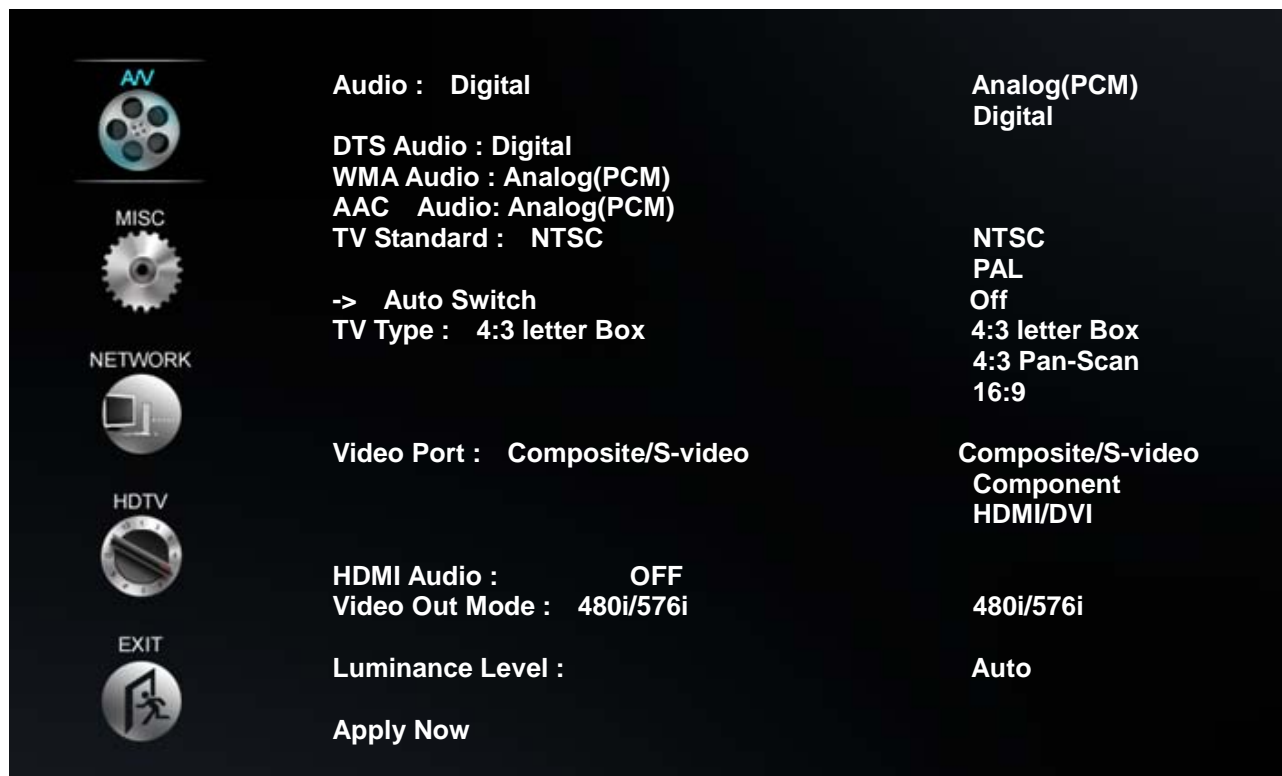
4 TViX HD Setup Menu

4.1 Audio/Video Setting

This section indicates the Audio/Video settings.

You can set password to enter into setup menu. Setup password protection is available. on MISC menu Within SET UP menu. Safety lock feature need to be enabled. This will block children changing setup accidentally.

The password is 1111



* **Audio** : You can set the mode of audio output depending on audio codec used.

- If you set Audio to Digital, you can set DTS and WMA to digital or analog.

- Please set this according to the audio format your receiver supports.

* **Analog** : Select this when you connect the audio with a stereo RCA cable (the RED and WHITE cable)

You can set the mode of audio output by each audio codec used. If you set Audio to Digital, you can set DTS and WMA to digital or analog. Please set this according to the audio format your receiver supports.

* **Digital** : Select this when you connect the audio with an optical or coaxial cable for digital audio connection to the Decoder/Amplifier. There will be no analog audio out from the analog audio port of the TViX HD.

* **TV Standard** : The default video setting of the TViX HD is COMPOSITE (NTSC/S-VIDEO or PAL C/S-VIDEO). This is the most general setting and works with almost all TVs.

* **Auto Switch** : is used when the video out is changed according to the NTSC , PAL or 24Hz format.

* **TV Type** : 4:3 Letter Box / 4:3 Pan & Scan for ordinary TVs / 16:9 for Wide TVs like HDTV or Plasma TV.

If the ratio of the TV is 4:3, select the 4:3 letter box or 4:3 Pan & Scan. If the ratio is 16:9, select 16:9.

* The 4:3 Letter box can show the original ratio of the multimedia file in 16:9.



* The 4:3 Pan & Scan will adjust the image of the 16:9 multimedia file to the 4:3 of the TV screen by scaling the image. (Currently, not support this mode)



* 16:9 can adjust any ratio of the multimedia file to the TV screen with the original image.



* **Video Port** : If you fail to see the initial TViX HD screen after turning the unit and TV on, make sure you have chosen the right TV out option by repeatedly pressing the TV Out button on the remote control. Composite/S-Video is a default.

* **HDMI Audio Auto/Manual** : Select Off when you use audio Amplifier or external sound with HDMI.

* **Video Out Mode** : Select this when you connect the video through a component (YPbPr) or HDMI cable. With HDMI setting, you can select the output resolution among Auto EDID/480P/720P/1080i/1080P. Setting it to 1080i will work on all HD grade TVs.

HDMI : Auto EDID/,480i/576i, 480P/576P, 720P, 1080i,1080P

Component/DVI : 480i/576i, 480P/576P, 720P, 1080i,1080P

* **Luminance Level** : Auto / 0-255 / 16-235, This option is enabled with HDMI or DVI Video out. (Auto EDID is not used)

* **Apply Now** : After configuration, please press 'Apply Now' to save the Video out state.



If you want to exit the Setting, Select the EXIT button() and then press OK on the remote control.

4.2 MISC Setting

This section indicates the MISC settings.

AV	Slide Show Effect :	Fade In/Out	
	Slide Show Delay :	5s	
	Date / Time Setting :		
MISC	FAN Speed :	Normal	
	Language :	English	English Korean
	Autorun :	ON	
NETWORK	OSD Display :	Normal	
	Safety Lock:	Disable	Enable
	Subtitle/Outline:	White/Black	
HDTV	Screen Saver	Disable	Enable Disable
	Remote Controller:	Common	
	Smart Navigation:	Smart	
EXIT	Font :	SYSTEM FONT	
	Load Factory Setup		

* **Slideshow Effect** : This is used when playing background music while watching picture slideshows. (Currently, not supported)

* **Slideshow Delay** : Set the slide show time interval (0 sec – 60 sec)

* **Date / Time Setting** : Adjust the clock on the VFD by using the arrow and numeric keys.



* **FAN Speed** : Select your Fan Speed. We recommend the Normal setting.

* **Language** : Select your language preference from the options.

* **Autorun** : You can listen to music(audio files) without display(TV). If you select “random”, it plays randomly. (Off-on-Random-Repeat-Random/Repeat)

* **OSD Display** : Select the type of OSD display. We recommend the Normal mode.

* **Safety Lock** : Default password assigned is (“1111”) .When safety Lock is enabled.

* **Subtitle/Outline**: Change the color of the subtitle and its outline.

* **Screen Saver** : If there is tvix_ss.jpg on the root directory, you can see this image(160*160 pixel) after 5 minutes. When the pause status or playback of audio(without slide show), Screen saver will work.

* **Remote Controller** : You can select your remote type. We recommend the common setting. If there is collusion between other device and TViX remote, you’d better Choose A or B type referring to remote image displayed.

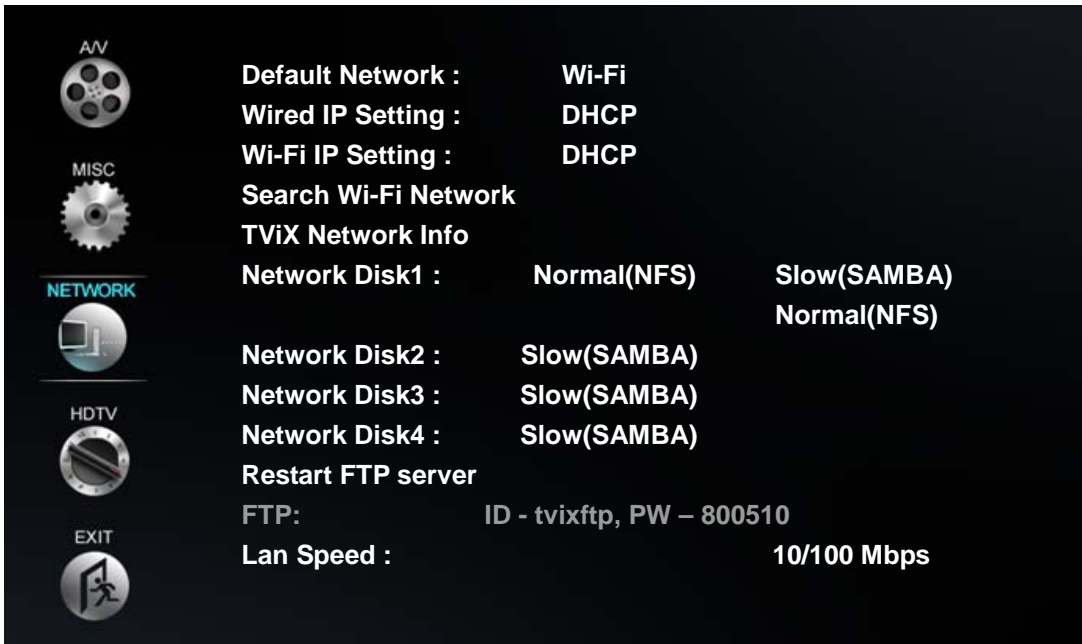
* **Smart Navigation** : If there is VIDEO_TS.IFO file in the folder, Clicking on the DVD folder will automatically playback .VOB content.

* **Font** : Show current font.

* **Load Factory Setup** : Recover to the factory setting, after rebooting, select the video out or language again.

4.3 Network Setting

This section indicates the Network settings.



* **IP setting** : Default setting is DHCP. If you cannot access via LAN with DHCP setting, use the Static IP setting. Please refer to Setting Network Configurations in TViX HD.

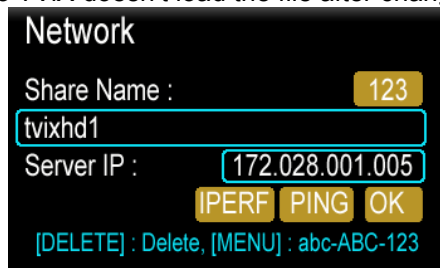
* **Network Disk** : Write the PC's IP address in the Server IP. (ex: 192.168.001.128)

Supports up to 4 Network disk server.

There are two network method in the TViX model. One is SAMBA mode another is NFS mode.

- SAMBA mode : You can play the file via network without any special software program, but the speed is lower than NFS mode. Particular folder need to be shared
- NFS mode : You must install the TViX NetShare utility in to your PC, and you can play the TP or DVD jukebox without any stutter.

We recommend to share the NTFS file system. FAT32 file system does not contain enough information to create a lasting file name, so TViX doesn't load the file after changing the file name.



For the detail instruction, you can download the NetShare installer and NetShare manual from our homepage.

www.TViX.co.kr/Eng

When several TViX Kit accesses the content from single PC, then user must prefer SAMBA setting.

* **TViX Network Info** : You can see the information of TViX's Network.

* **FTP** : If you want to use FTP function, you must use ID & password displayed on Network Menu within SET UP. For the detail instruction, please refer to following FAQ. - <http://www.tvix.co.kr/eng/faq>

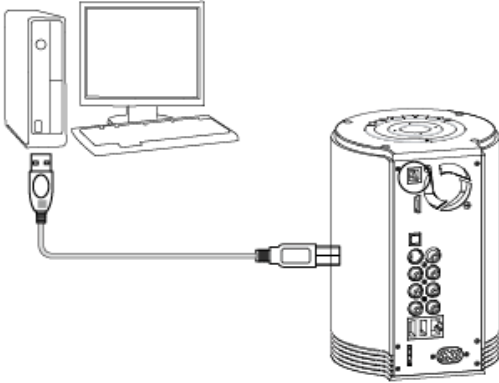
* **Lan Speed** : To use 1000 Mbps speed, please connect CAT6 cable.

** Number 1 key is changed as @→ : → / → _ → - when this key is pressed.

5 Easy Usage of TViX HD

5.1 Making an HDD Folder

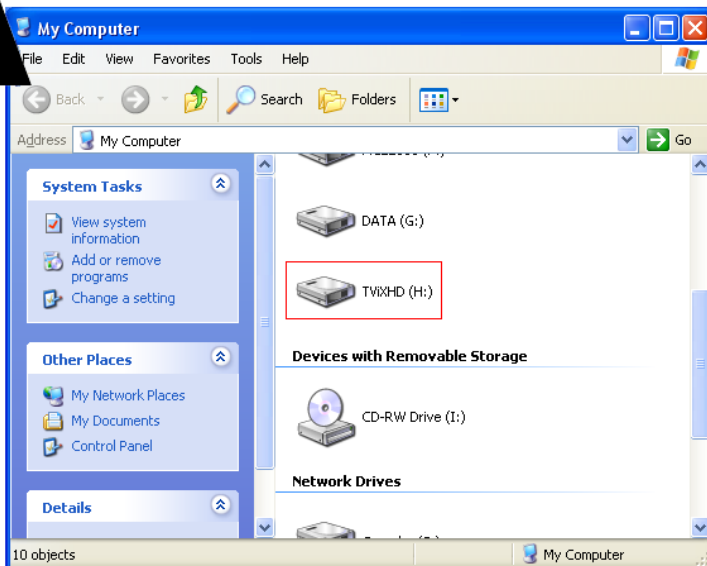
1 As shown in the picture below, one end of the USB cable should be connected to the USB connector of the TViX and the other end to the computer.



CAUTION!

The USB cable has a different shape on both ends. We use a USB 2.0 type "A" Plug(male) to "B" Plug(male).

A

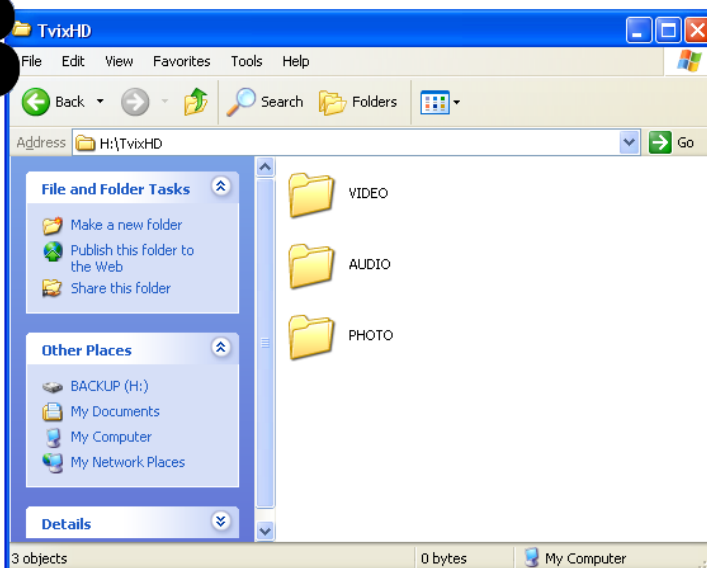


2 After connecting to the PC, turn on the power of the TViX.

3 Double click on the icon 'My Computer' on your monitor and you will see a newly created drive; TViX as shown in picture 'A'.

(The name of the drive can be changed.)

B



4 For easy usage, double click TViX and make separate folders named video, audio, and photo. Then store all your files accordingly to each folder.

5.2 Play Video Files

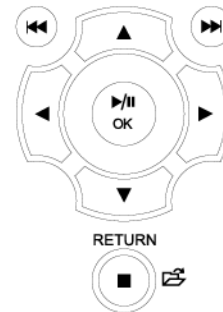


When installation is successfully finished, you will see screen A. You can copy a video file into the VIDEO folder in advance.

1 SETUP, VIDEO, AUDIO, PHOTO icons is shown.



2 Select the Video menu by using the Left/Right arrow button. If you want to change the partition of the HDD, press the Jump/Repeat button.



3 After selecting the icon, press the OK button.



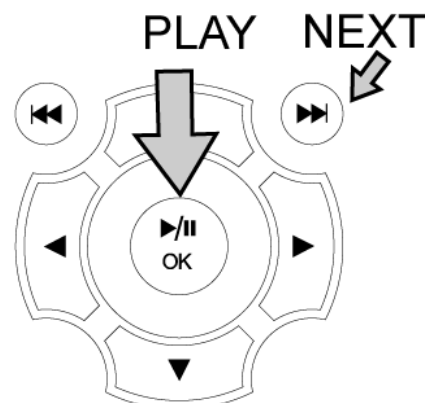
4 You will see 2 files in the Video folder.

5 Using the up/down button, select the Video file content. By pressing the OK button, you will be able to playback the video file.

TIPS

If you want to play the next video, press the NEXT(▶▶) button.

If you want to play the previous video, press The previous(|◀◀) button.



5.3 Play Audio Files

You can copy an audio file into the AUDIO folder in advance and play music files.



1 If you cannot see screen A, press the MENU button on the remote control.



2 Select the Audio menu on screen A and press the OK button.

3 You will see the audio file content that you have just copied.

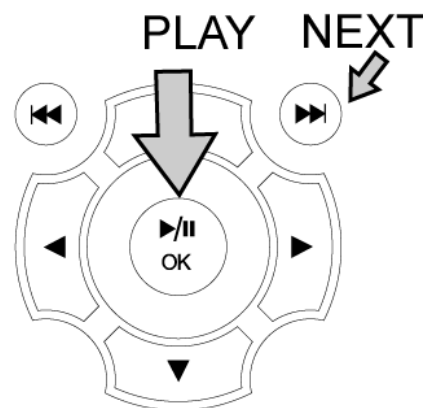
4 Select the audio file content using the up/down button. Then by pressing the OK button on the content

highlighted you are able to playback the audio file.

TIPS

If you want to play the next audio, press the NEXT(▶▶) button.

If you want to play the previous video, press The previous(|◀◀) button.

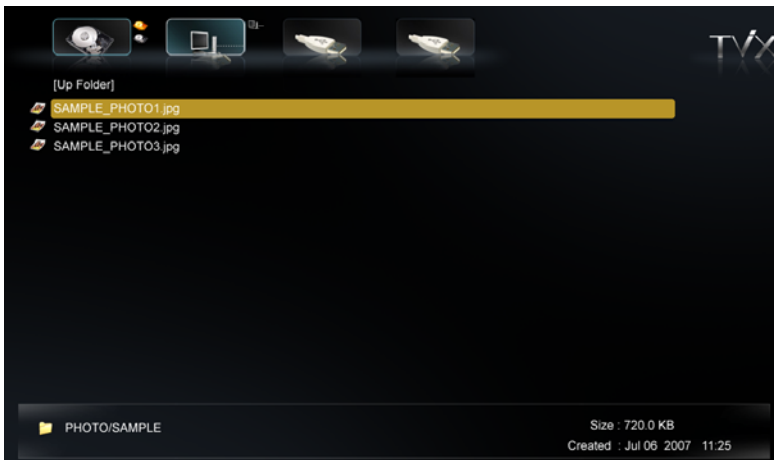


5.4 Play Image Files



You may copy image files into the PHOTO folder in advance and play the image or photo files.

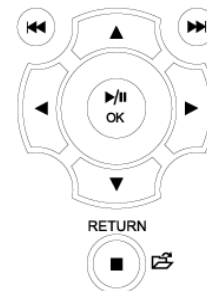
1 You can press the PHOTO button on the remote control without selecting from the menu screen.



2 Press the PHOTO button.

3 You can see the image files that you just copied.

4 Select the image files using the up/down button. By pressing the OK button, you can easily play the image file content.



5 If you want to play the next image, press the NEXT(>>|) button.



TIPS

You can play the Video and Audio as well as the Photos with the remote control.

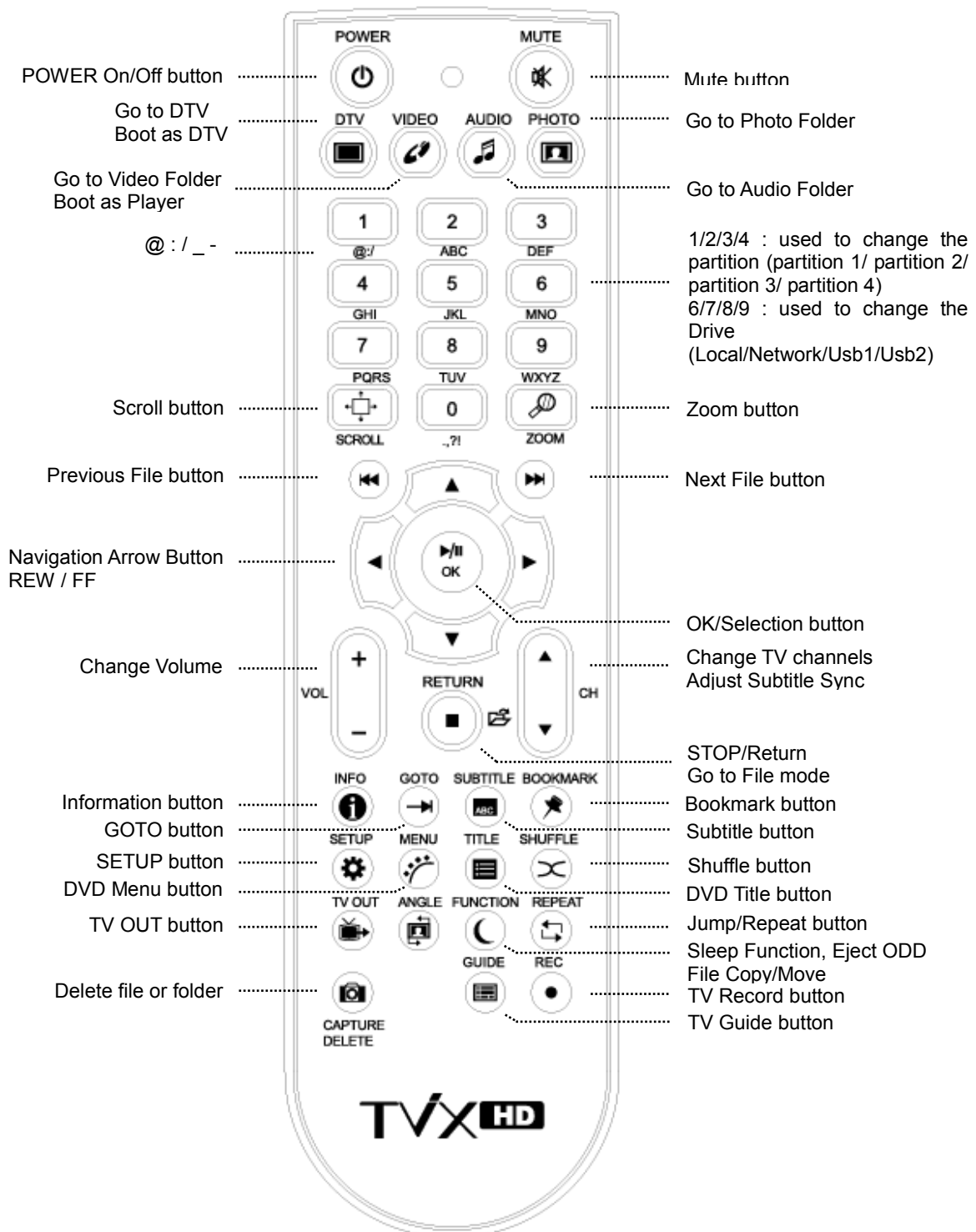
If you connect the LAN cable or external USB, Network or USB icon is enabled on the main Menu . We're supporting up to 4 hard disk partitions, 4 network PC, 4 USB1 partition and 4 USB2 partition.



6 Using the remote control

6.1 Basic Functions

This indicates Remote Buttons. Some buttons is not available without DTV Tuner.



Numeric Keys 1, 2, 3, 4 : used to change the partition (partition 1/ partition 2/ partition 3/ partition 4) in the TVIX Kit internal Hard disk

Numeric Keys 6, 7, 8, 9: used to change the Partition (Local/Network/Usb1/Usb2)

< Changing Batteries >

- Use new batteries (2 AAA size batteries are included in the package).

6.2 Descriptions of Each Buttons

During the playback of multimedia files.

Basically you can choose the file you want and press the OK button.

For playback of DVD files copied to the HDD, please locate the cursor to **VIDEO_TS.IFO** file and press OK.

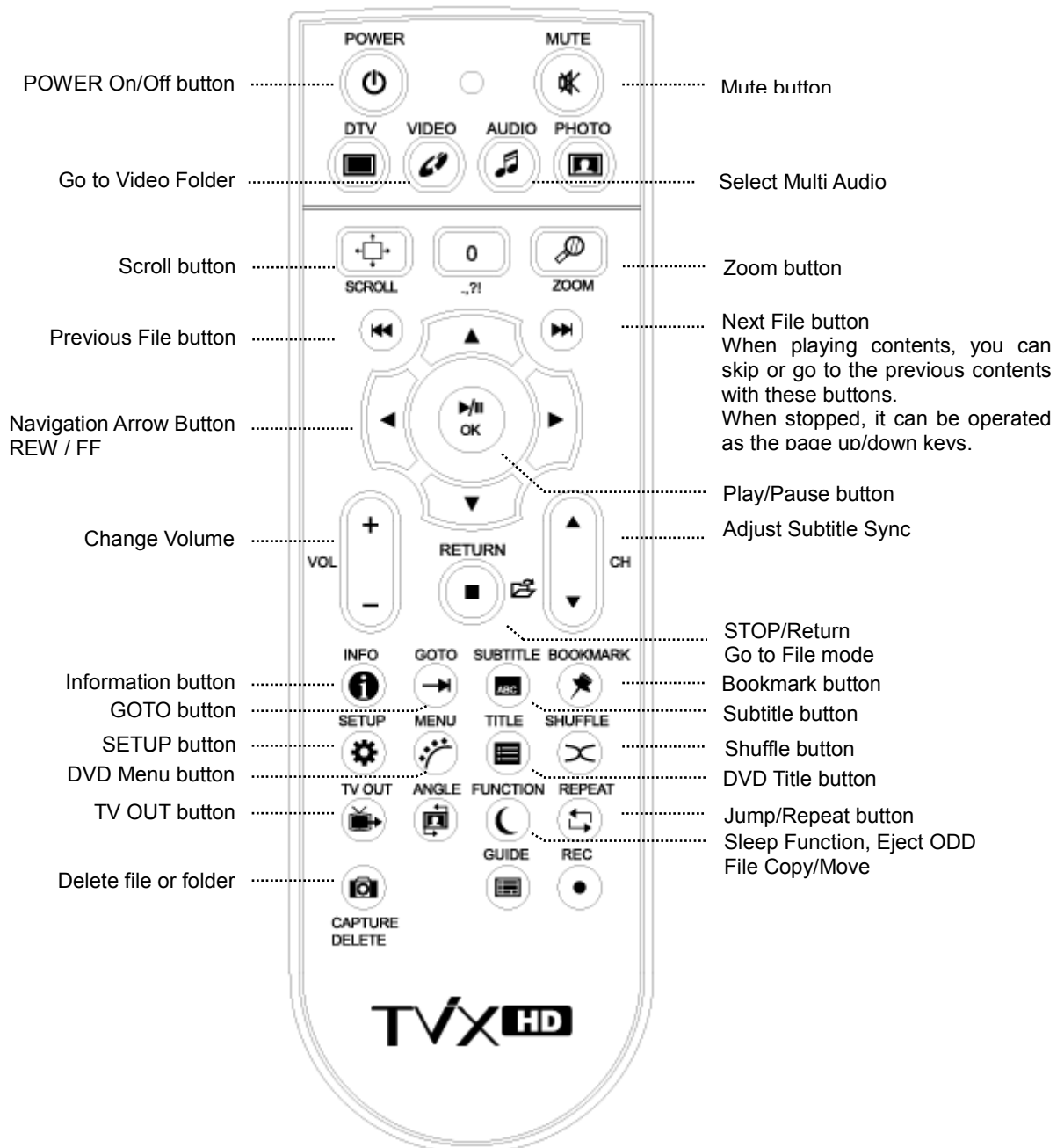
You can do a full DVD navigation like you would do with a DVD player.

6.2.1 Video Playback

When you press the VIDEO button on the remote control, only the VIDEO folder Contents available on the TViX HD will be displayed on the TV Screen.

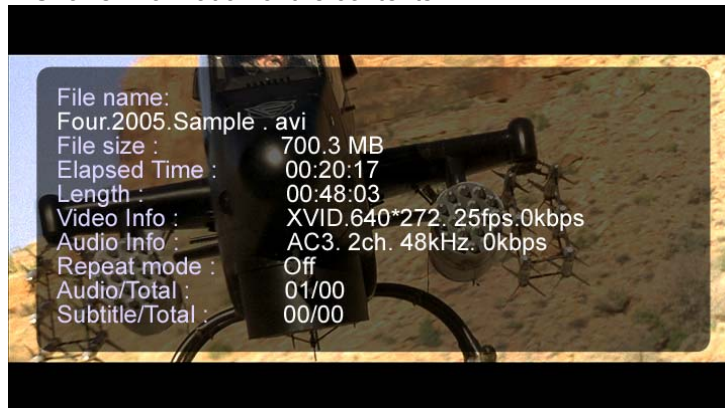
This only applies to the active partition if you have more than one partition.

When you press the **JUMP/REPEAT** button on the remote control, you can select another input source.

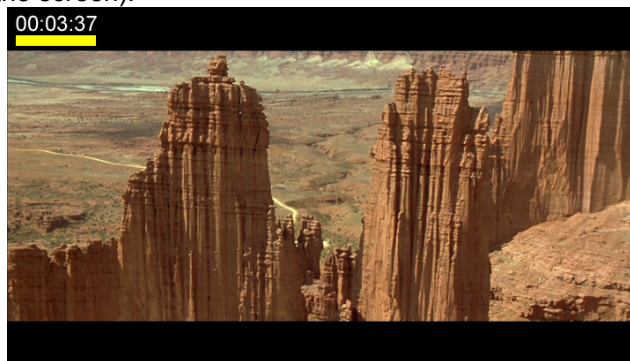


<NOTE>

- INFO Button :
 - First Press – Shows information of the contents.

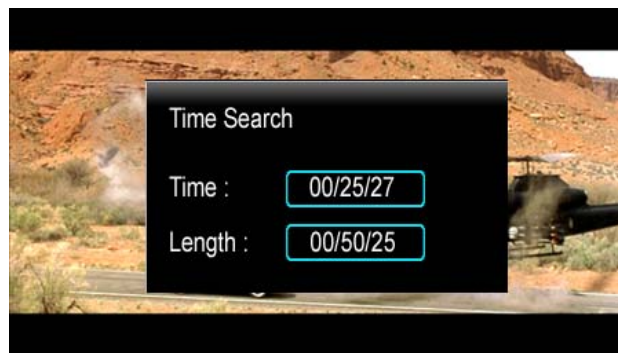


- Second Press – Shows the elapsed time (the progress bar is displayed on the upper left hand corner of the screen).



- Third Press – Show remaining time.
- Forth Press - INFO off
- Pressing Info button while you are not playing files shows remaining HDD space.
- SUBTITLE Button :
 - Supports SMI Multi-subtitle control with the Subtitle button.
 - First Press : Shows the Subtitle OSD. You can change the subtitle size using the OK button. If you press UP/Down button, you can change the position of subtitle.
 - Subtitle color or outline is configurable on the SETUP menu.
 - Supports .SUB (bitmap) + .idx subtitle files
 - PAL format .SUB subtitles are not supported in this version.
 - You can go to subtitle file selection mode by pressing TITLE button (next to MENU) on a remote controller. You can navigate folders and files and press OK button on a subtitle file you want.
 - You can change the subtitle sync using CH +/-
- ZOOM Button :
 - First Press – Zoom, you can change the size by pressing the arrow buttons.
 - Second Press – Full screen
 - Third Press – PAN&SCAN full screen (Currently, Not support this mode).
 - Fourth Press – Zoom Off
- BOOKMARK : If you stop the movie, the stop position will be automatically saved and you can resume it later anytime by pressing the "bookmark" button on the remote control.
- SETUP Button
 - Picture adjustment. Contrast → Brightness → Saturation→Hue.
- DELETE Button : is used to delete the file or folder from the TViX Local hard disk.
If you configure the remote controller lock up option on the SETUP menu, You must press the password ("1111") if you want to delete the file.
When you do delete the file or folder, you must play the check disk periodically.
TViX player is shown the disk check message if you need to check the hard disk..
<http://www.tvix.co.kr/ENG/FAQ/FAQM5000U.aspx?act=RD&id=130&pg=0&CATID=3&SCATID=2>
- Sleep function has been implemented.
 - During playback You can set sleep time by pressing function key repeatedly on a remote controller.

- SLEEP ON will blink for 3 minutes before turning off
- The present playing time will be displayed with the GOTO function.



- FF/REW Button
 - AVI : 2X→4X→ 8X →16X → 32X.
 - DVD Jukebox : 2X → 4X → 8X →16X → 32X → 64X.



- STEP / SLOW Function
 - With Pause mode - Right button : Slow Motion playback.
 - UP/Down Button : 15 seconds skip or 15 seconds backward

* Press the VIDEO button and you can filter video files among those stored in the TViX HD.

TIPS

- * Improved to save up to eight bookmarks on eight individual files. (It cannot save eight bookmarks on a single file.)
- * Recognizes AVI, MPG, VOB, CAT, M2P video files only.
- * A video file where the folder is setup with a password cannot be saved.
- * When replaying the same file, only the last play position will be saved (thus, bookmarked).
- * Among the bookmark list, a file deleted from the hard disk will be automatically deleted from the bookmark list as well.
- * Cannot save the bookmark list when in USB HOST or LAN mode.

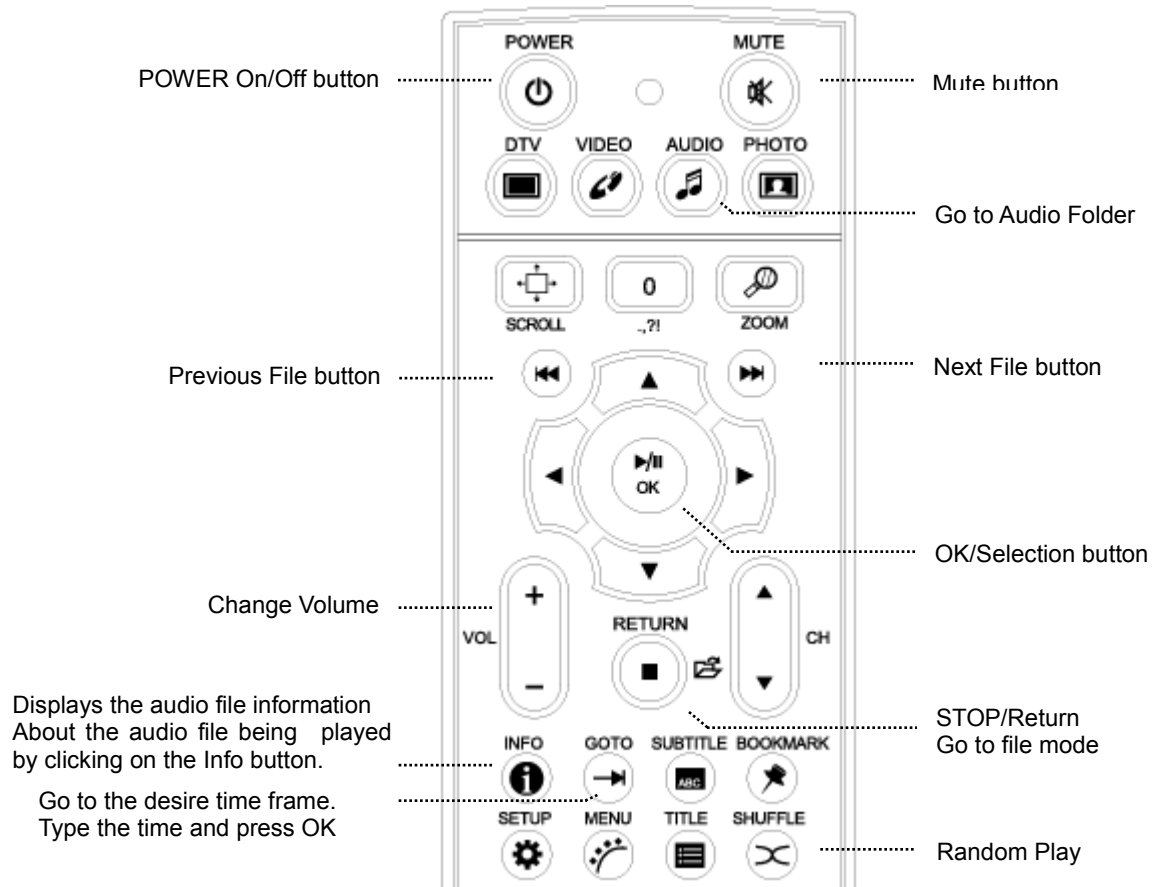
< DVD Jukebox Key >

- OK Button - When a movie is playing it operates as a play button. In the menu screen it operates as a select button.
 - PAGE-DOWN - Go to the next chapter.
 - PAGE-UP - Go to the previous chapter.
 - AUDIO Button - You can change the audio. (International dubbing, DOLBY, 2CH, 5.1CH, DTS etc.)
 - SUBTITLE - Shows the subtitle menu.
 - MENU Button - Shows the DVD menu screen.
 - TITLE Button - Shows the DVD title menu.
 - ANGLE Button - If the DVD title has an angle function, you can change the angle.
 - GOTO Button - You can choose the time, chapter and title. After choosing you can play directly.
 - Number + OK - Play the chapter of the number directly.
- ** The operation of "PICTURE" and "VOLUME UP/DOWN" is the same for Video operation.

6.2.2 Audio Playback

When you press the AUDIO button on the remote control, Only the contents available on the Audio folder of TVIX HD will be displayed.

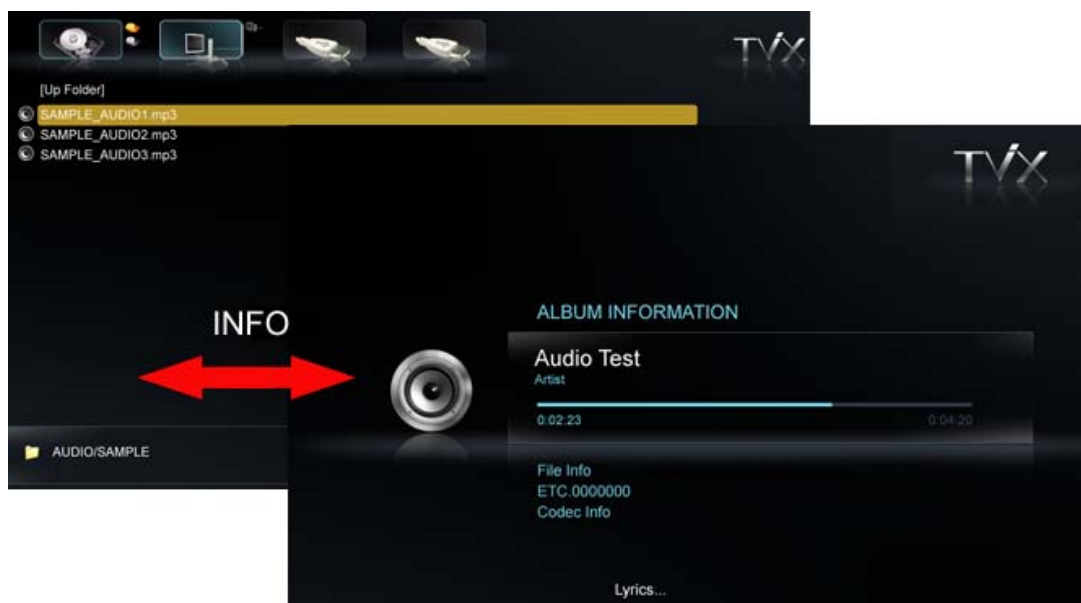
It applies only to the active partition(first partition) if you have more than one partition.



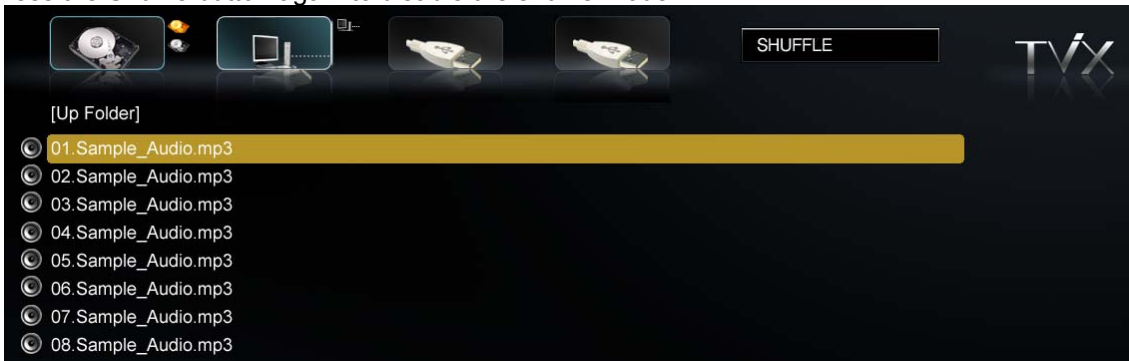
<NOTE>

** Some functions require the latest firmware updates in first.

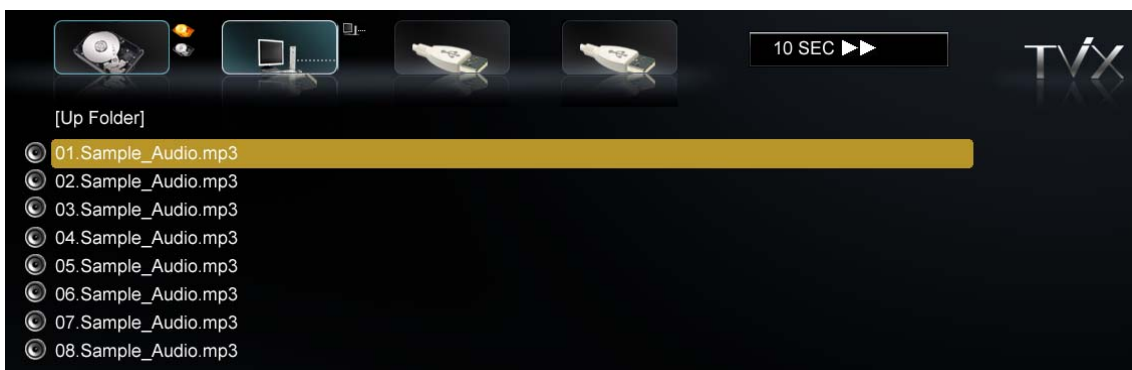
- If you press the audio file, then you will get the screen with Audio information. Pressing the info button again will take you back to the file list, where you can choose another song to hear. If there is no Tag information, it displays basic file information.



- Shuffle Function (Random Playback)
 - Press the Shuffle button to play the files of the present directory randomly.
 - Press the Shuffle button again to disable the shuffle mode.



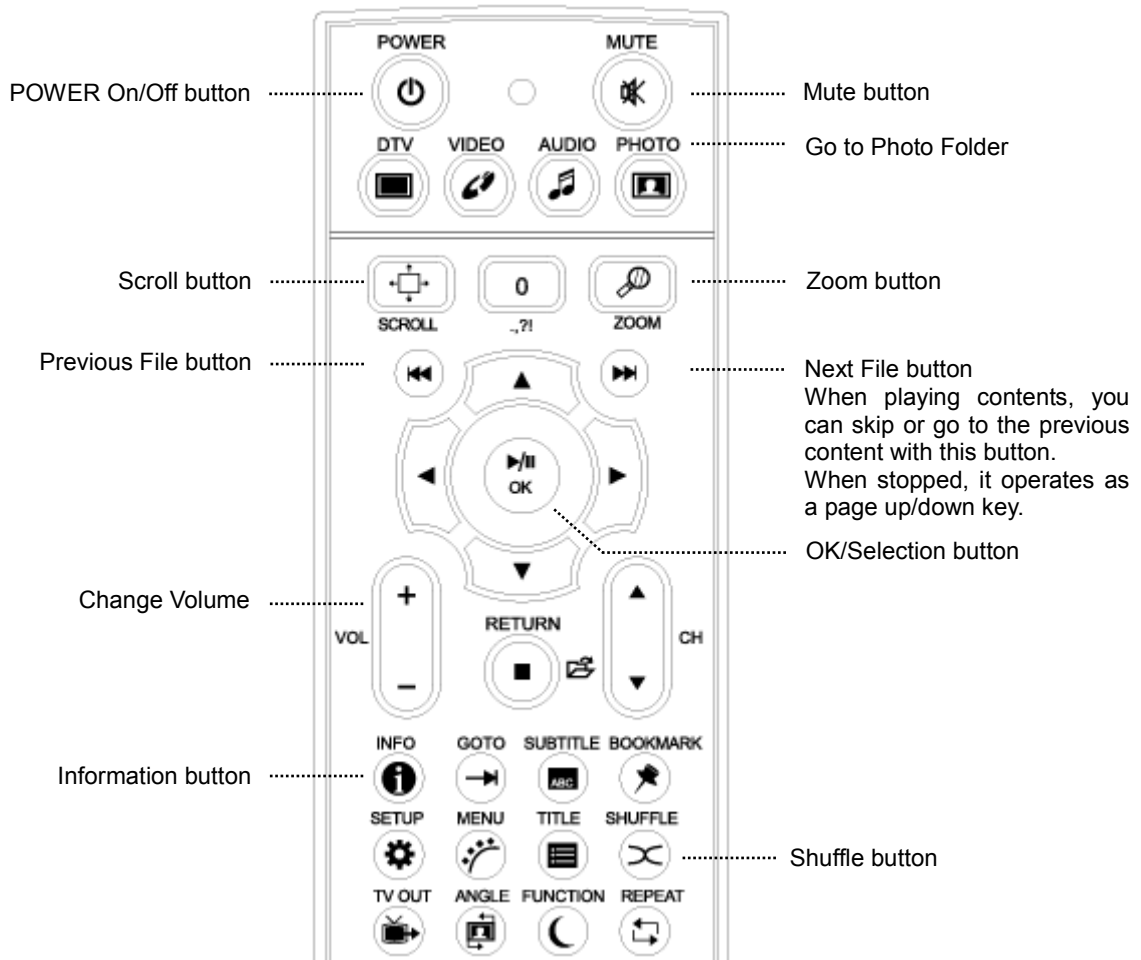
- Supports 10 Sec function when playing WMA, WAV... files.
10 sec FF/REW function is available while playing audio files.



- Supports Lyric Files (.lrc)
If the file name of a music file and .lrc file are the same, the lyrics will be displayed automatically.
- Supports ID3 TAG (ID3V1) when playing music files
 - Press the INFO button to view the ID3 TAG (ID3V1).
 - You can see additional information recorded on the music files, such as the artist, album etc.
 - OGG also displays basic Tag information
- m4a extension is also supported.
- You can change the audio tracks on WMV files. Just press Audio key on the remote.
- When playing the DTS wav, adjust the TViX volume to 25 level.

6.2.3 Image Playback

When you press the PHOTO button on the remote control, only the contents available on the PHOTO folder of TVIX HD will be displayed.
 It applies only to the active partition(first partition) if you have more than one partition.



<NOTE>

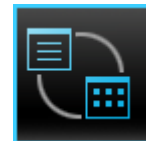
- You can set the slideshow time interval at the SETUP menu.
- You can change and set the size of the picture with the ZOOM and SCROLL button.



- Some non-standard JPEG files may not be displayed. .[Progressive jpeg not supported].
- If you press the SETUP button, you will see in sequence the Brightness → Contrast → Hue → Saturation menus. In these menus, you can adjust the Contrast, Brightness, Hue and Saturation by pressing the left/right arrow buttons on the remote.
- The currently supported maximum resolution of picture Images is 3888 x 2592.
- Support browsing by icon mode
 Make a empty file named as "icon.tvix" on the folder that you want to browse by icon.
 The file name for the file used for the icon files is case sensitive, it must be the exact same name as the media file except the extension must be jpg or png(if you want to use transparency, set the transparency color as 0xC8C8C8.)
 To show the folder as icon, please put "folder.jpg" or "folder.png" on the Specific folder.
 The maximum icon size is 720 * 480, and the best size is 100 * 136.



Press the FUNCTION key on the folder, USER can toggle the ICON mode.

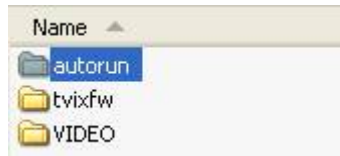


6.3 Extra Features

6.3.1 Using the AutoRun Function

When you want to play music with the TViX, but do not have any display devices, the following function may come in handy.

- 1 Make a folder and name it, "autorun" and place it in the root directory of the First partition.



- 2 Copy media file(s) or list file in the "autorun" folder.
- 3 If you want to change the setup, push the SETUP button on the remote control. Then go to the SETUP/MISC tab. Set AutoRun option to ON. If you set the AutoRun option to OFF, the function will not work. If you select 'Shuffle,' files will play randomly.
- 4 After setting the configuration, turn off the TViX Kit and then turn it on again. The TViX kit will play back the media file Contents automatically available in the Autorun folder of TViX HDD.

<< Using WinAMP Playlist (.m3u or .pls) >>

- 1 Connect TViX Kit to PC.
- 2 Open the files that is stored at TViX in " Winamp " Program.
- 3 Select the folder you want at Winamp after pressing SaveList, You should save the files at the same partition where the opened files were stored.



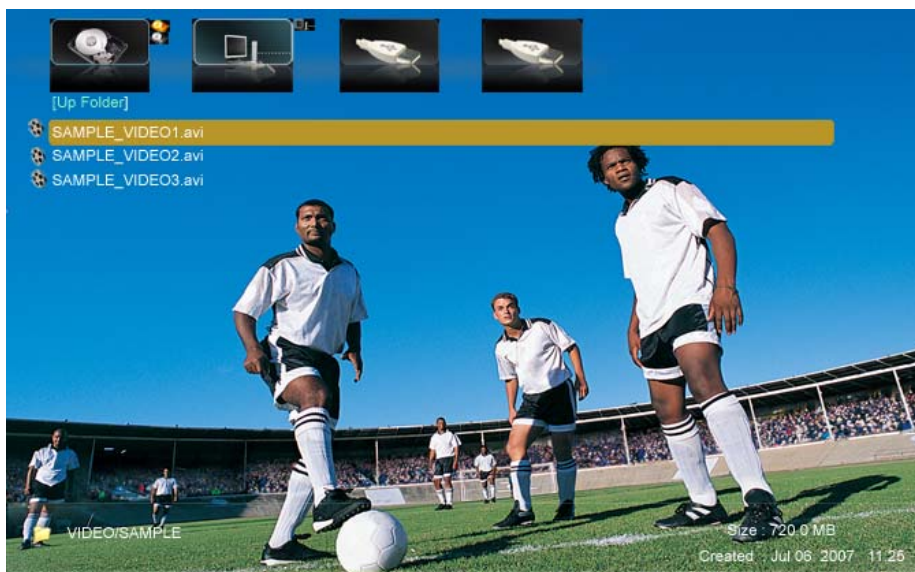
- 4 Disconnect TViX from PC safely.

6.3.2 Using Wallpaper

If you put a JPEG file named "TViX.jpg" under the folder, which you want to change the wallpaper, the wallpaper of the folder will be changed.



You can select any wallpaper, you want by using the various JPEG files of resolution 1280*720 pixels only for different folders.



<Tips>

- If you want to change the basic wallpaper, put a JPEG file named tvix.jpg under the Root directory.
- 1280*720 pixels is available for the size of the wallpaper.
- In Windows XP, when you name the JPEG file, "Hide extensions for known file types" should be unchecked in the Tool-Folder Option-View-File/Folder. Otherwise the JPEG file could be named as tvix.jpg.JPG and you would not be able to see your desired wallpaper.

6.3.3 Using Internet Radio

* Notice

- TViX can be connected via network
- Download the .pls file or .m3u (WinAmp playlist) file.
- Before play the .pls or .m3u file, you must set the network setting (DHCP or Static IP).
- TViX supports only shoutcast streaming format and it doesn't support other proprietary streaming formats
TViX is available to shoutcast method and don't support private server.

1 Download the .pls file.

You have to browse the radio station site like www.shoutcast.com

SHOUTcast is Nullsoft's Free distributed streaming audio system. Thousands of broadcasters around the world are waiting for you to tune in and listen. Take a peek through the SHOUTcast directory to start browsing the most popular stations. Be sure to select your connection speed and then what kind of music you're looking for over on the right hand side for optimal listening pleasure.

2 Right click Content you want to play--> select Save Target As... And save the .pls file into TViX HD or share folder.



3 Edit the playlist file.

You can edit downloaded playlist(.pls) file using the WinAMP program.

4 Run WinAMP--> Open playlist and select downloaded .pls file.

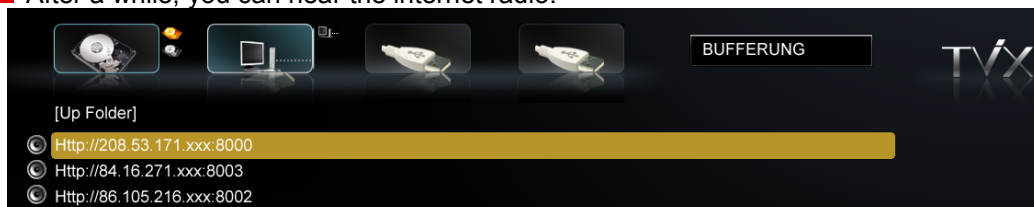


5 You can remove unnecessary items from the pls/m3u file using the PLAYLIST

6 Save the playlist to .m3u or .pls extension.

7 Point and click the .pls or .m3u file in the TViX hard disk or network share folder (ex: tvixhd1)

8 After a while, you can hear the internet radio.



6.3.4 Using File Copy/Move

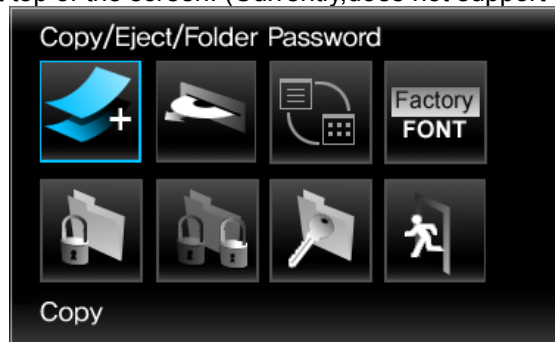
TViX supports File Copy functionality without Using PC. You can now copy Contents from external USB hard disk to the internal hard disk of TViX and also Copy the contents within the internal hard disk of TViX.. (Currently, move function is not supported)

TViX internal HDD < > internal HDD,

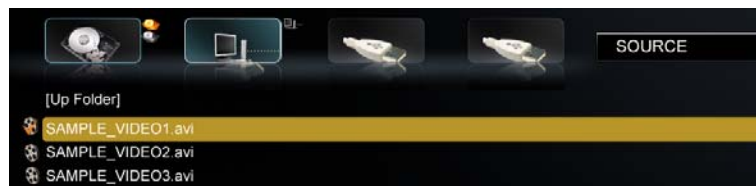
TViX internal HDD < > Network DISK using Netshare. with wired LAN connection

TViX internal HDD < > USB Host DISK (except ODD device.)

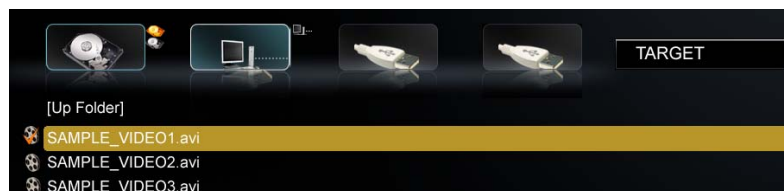
- 1 Select the folder containing source files, Press Function key and select Copy/Eject Icon then you will Source displayed on the right top of the screen. (Currently,does not support folder copy)



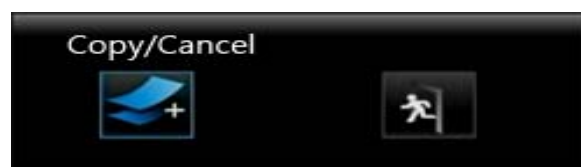
- 2 Press Ok button. (If you press 0(zero), the selection will be inverted) If file is selected, you will see red checked icon on the file list.



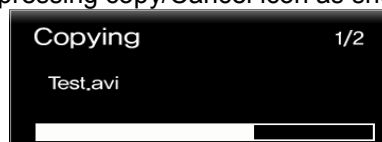
- 3 After selecting the file, press Function key again and then on the right Top of OSD display will be changed to Target from Source To cancel copying, press Function key again and then press cancel icon.



- 4 In case of target mode, you can use arrow key, so that you can change the target folder.
- 5 Navigate to the folder where you want to copy, and press Function key again then select Copy icon.



- 6 You will see progress OSD after pressing copy/Cancel icon as shown below



6.3.5 Folder Security

TViX supports the Folder protection by assigning the Password to the Folder .Before accessing its content

- 1 Select the folder you want to assign the password on.
- 2 Press the Function button on your remote controller.
- 3 Select the fifth icon to set up the password like the picture below.



- 4 Press a four-digit number from the Numeric key on the remote and once again press the same number for confirmation (Ex: 1234). Press the OK button to set up.

< Notice >

- Replace and Remove the password icons will be activated when the password is assigned to the folder
 Replace the Folder Password Clear the Folder password



Toggle ICON MODE



Reset to the Factory Font



Exit



- If you insert a wrong password, TViX automatically goes to the file-selecting page.
- If you forget the password, please remove tvix.pss file after connecting the TViX Kit to your PC.
- The password should consist of numbers only.
- You cannot delete the folder set up by a password with the delete key. Remove the password in first.

6.3.6 Using ttf Font

You can change the TViX's Font manually. Currently fonts Of Windows or Linux can be Copied, whose size not exceeding 6MBytes and Placed on TViX HD.

- 1 Copy .ttf files from Windows-Fonts folder to the internal hard disk of TViX.
- 2 After starting the TViX, you can see copied font files(ttf extension)



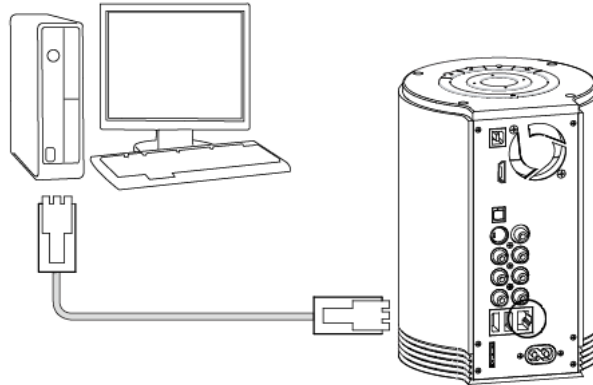
- 3 Click .ttf file, and font will be changed accordingly.
- 4 If you want to change to default font, press FUNCTION key on the Remote and then press Factory

Font ICON ().

6.4 LAN Connection

6.4.1 Connect PC via Network

< When connecting the computer directly to the TViX HD >



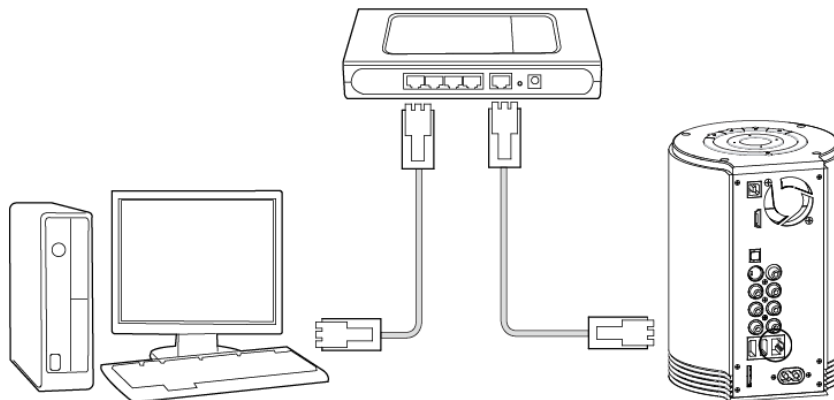
Connect the LAN cable to the LAN port of both the TViX HD and the PC.

TIPS

In this case, you generally use a LAN cross cable type.

If the computer's LAN card was connected to an Internet line, you can install an additional LAN card to your PC and connect that LAN card to the TViX.

< When connecting with IP Router or Hub >



Connect the LAN cable to the LAN port for an IP Router or Hub.

TIPS

In this case, you generally have to use Direct LAN Cable type.

● **SAMBA mode** : You can play the file via network without special Software program, but the speed is lower than NFS mode. (Currently, do not Support in Vista)

● **NFS mode** : You must install the TViX NetShare utility on to your PC, but you can play the TP or DVD jukebox without stutter.

We recommend to share the NTFS file system. FAT32 file system does not contain enough information to create a lasting file name, so TViX doesn't load the file after changing the file name.

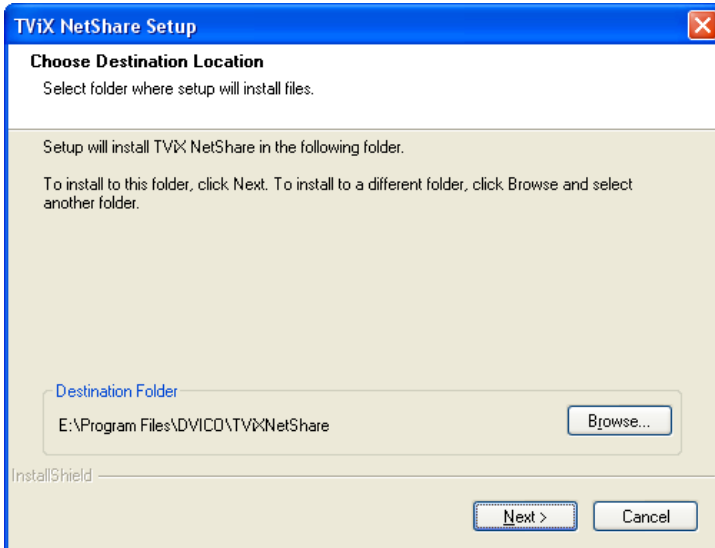
* Please connect your TViX product to PC with enclosed USB cable once.

6.4.2 TViX NetShare Installation

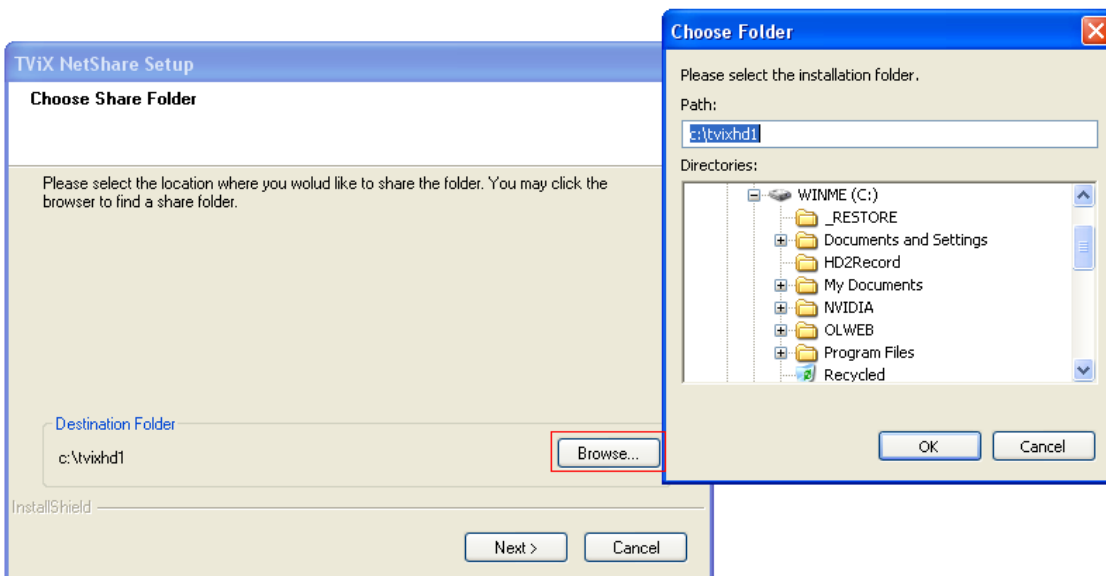
- 1 Most likely there will be an updated version of the files on our web site(www.tvix.co.kr/eng) You should download the latest TViX Netshare installer in advance.
- 2 Run TViX Netshare installer and follow the on-screen prompts to install software.



- 3 The "Choose Destination Location" window will appear. Click on "Next" if you want to install the Net Share in the default directory. Otherwise, you can choose a different directory by clicking on "Browse".

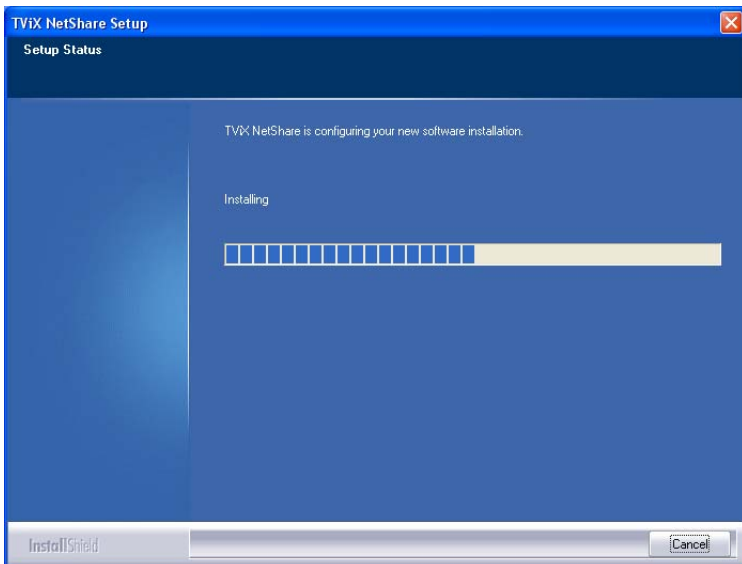


- 4 Please select the location where you would like to share the folder. You may click the browser to find a shared folder.

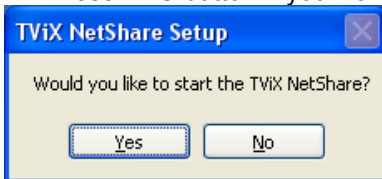


We recommend to share the NTFS file system.

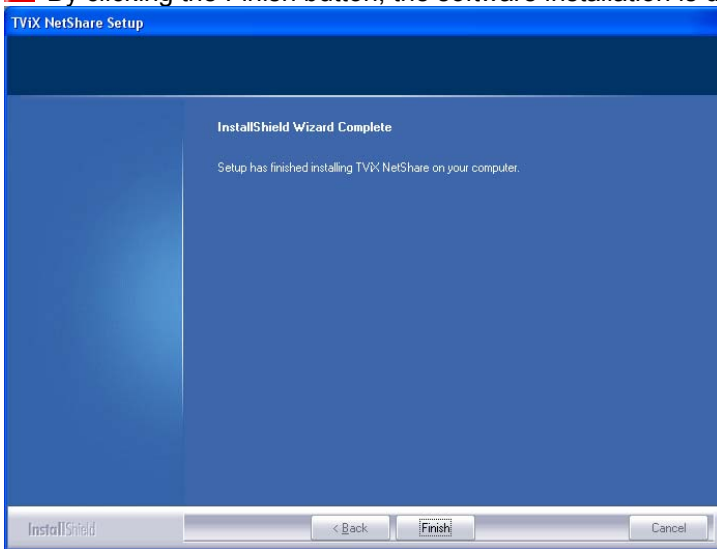
- 5 The "Setup status" window will appear.



6 Press YES button if you want to run the TViX Net Share automatically.



7 By clicking the Finish button, the software installation is done.

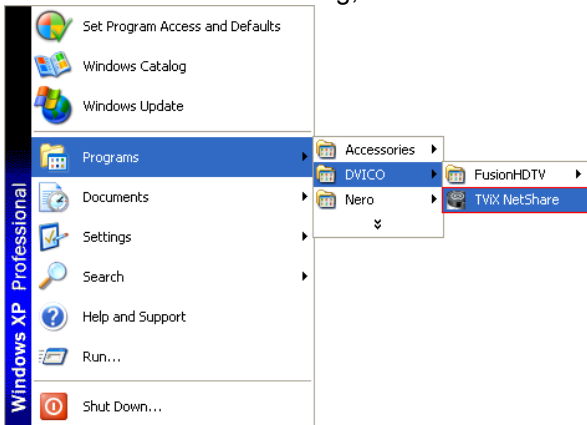


8 Press “Unblock” for the Windows Security Alert.



6.4.3 Using TViX NetShare

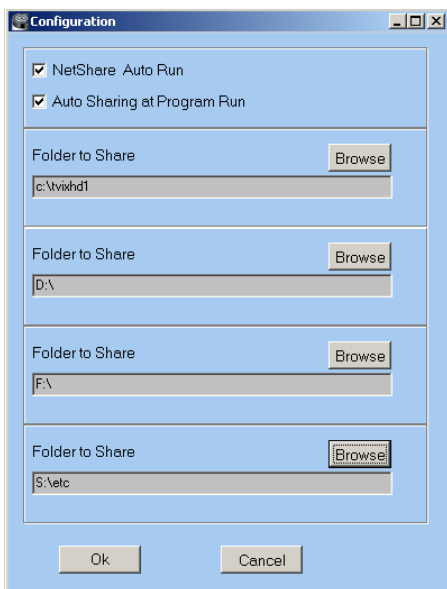
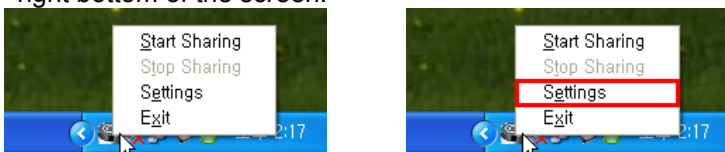
- 1 Click Start, point to Program->DVICO->TViX NetShare.
If TViX Netshare is working, You don't need to run this program again.



- 2 After starting the Net Share program, you can see Net Share icon on the tray..



- 3 Start the setting by right clicking the Net Share icon at the low right bottom of the screen.



- Start Sharing : Used to start the sharing
- Stop Sharing : Used to stop the sharing
- Settings : Used to set the share folder
- Exit

- 4 After the Launch of Netshare software Application on the system. Right click on the TViX ICON followed by Setting.

- NetShare AutoRun : used to autorun when the windows re-starts.
- Auto Sharing at Program Run : used to run during sharing Simultaneously.
- Folder to Share : used to Select the folder and Files from the drives shared by Clicking on the Browse ICON.
In case of FAT32 file system, TViX doesn't load the file after changing the file name.

CAUTION

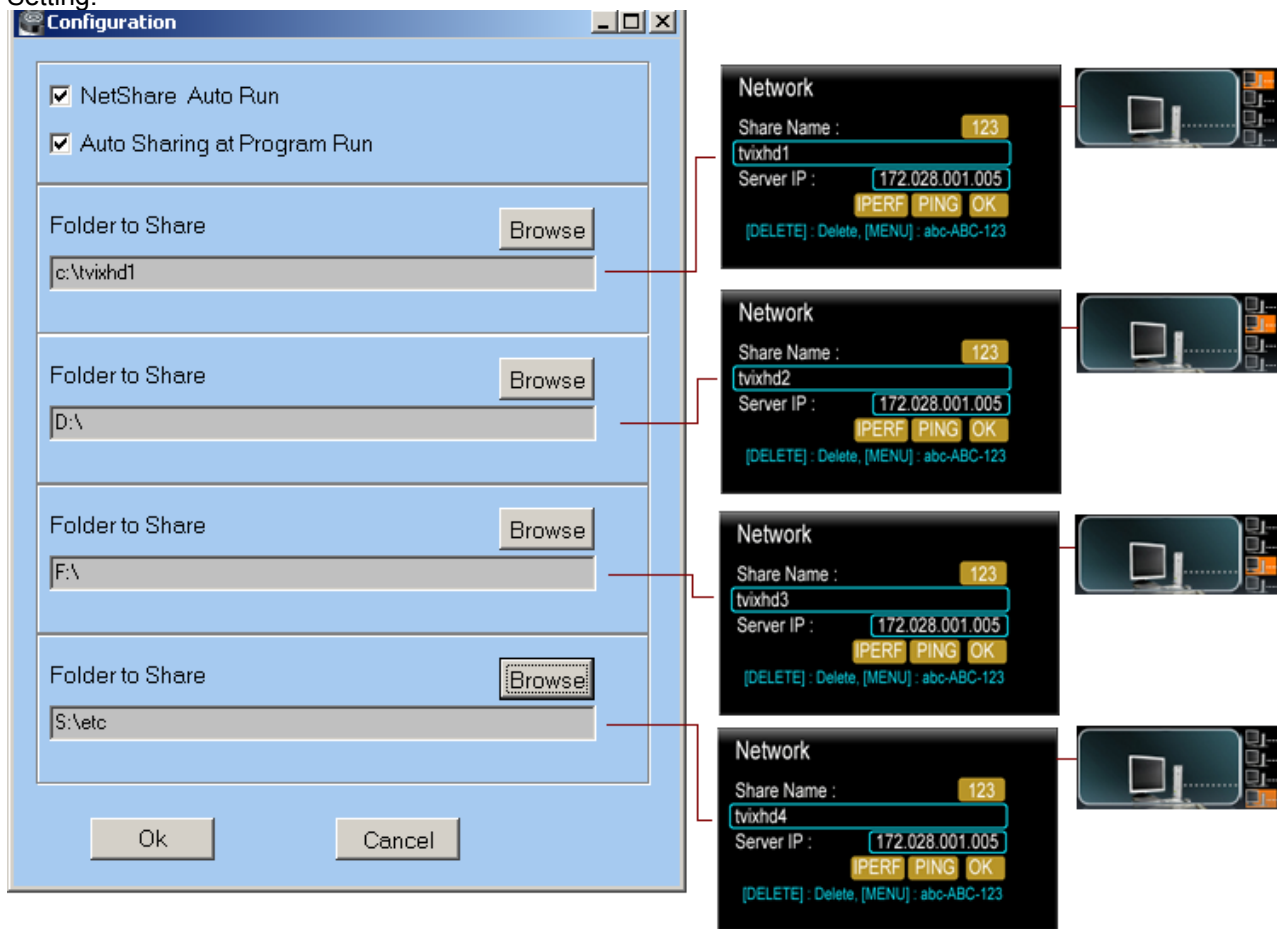
If you press the stop sharing when the network is connected, you can see "TViX Sharing closed." On the setting feature.

You must again Press the "start sharing" on the tray window again for network Sharing to start.

6.4.4 Sharing of Multi folders

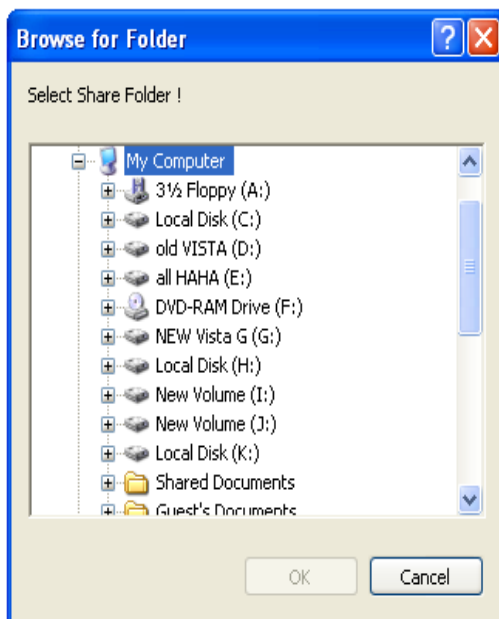
ACTION ON SYSTEM DISPLAY

1 After the Launch of Netshare software Application on the system. Right click on the ICON. Click on Setting.



2 Click on Browse, Corresponding to Folder 1 to Share. A window POPS UP as shown.

3 Select the Appropriate folder, Containing Media Files from desired Drive and Click OK.



4 Again Click on Browse, Corresponding to Folder 2~ Folder4 to Share.

5 Select the Appropriate folder, Containing Media Files from the desired drive and Click OK.

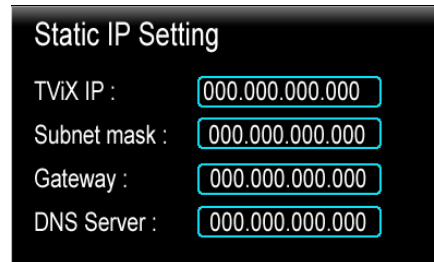
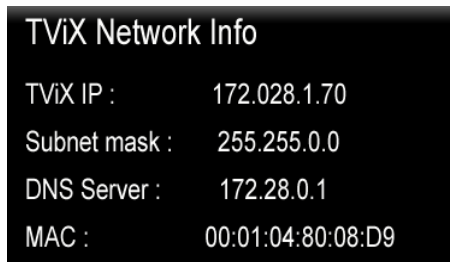
6.4.5 Setting Network Configurations in TViX

ACTION ON SCREEN DISPLAY

There is no difference between SAMBA mode and NFS mode.

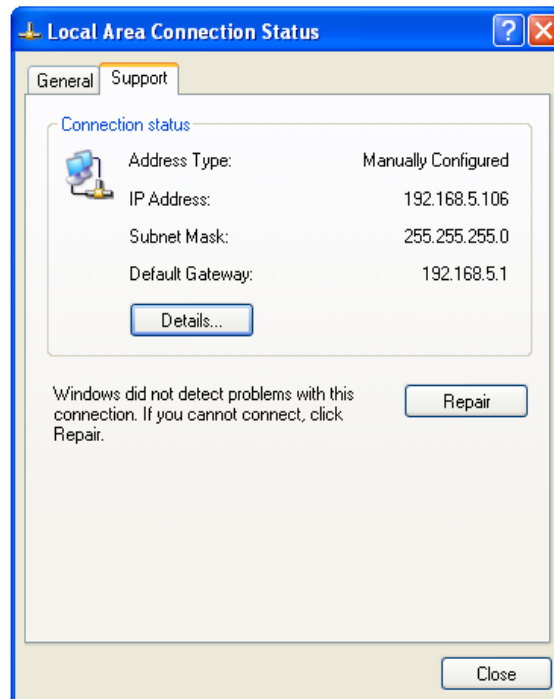
1 Press [SETUP] on the remote control to view the setup screen. On that screen, select NETWORK setting. The default is DHCP and if you want to set Static IP, you can select Static IP on the IP setting. Click OK on Static IP.

If you used the DHCP you don't need to assign the IP address because it's assigned automatically. If you cannot access via LAN with DHCP setting, we recommend using the Static IP setting.

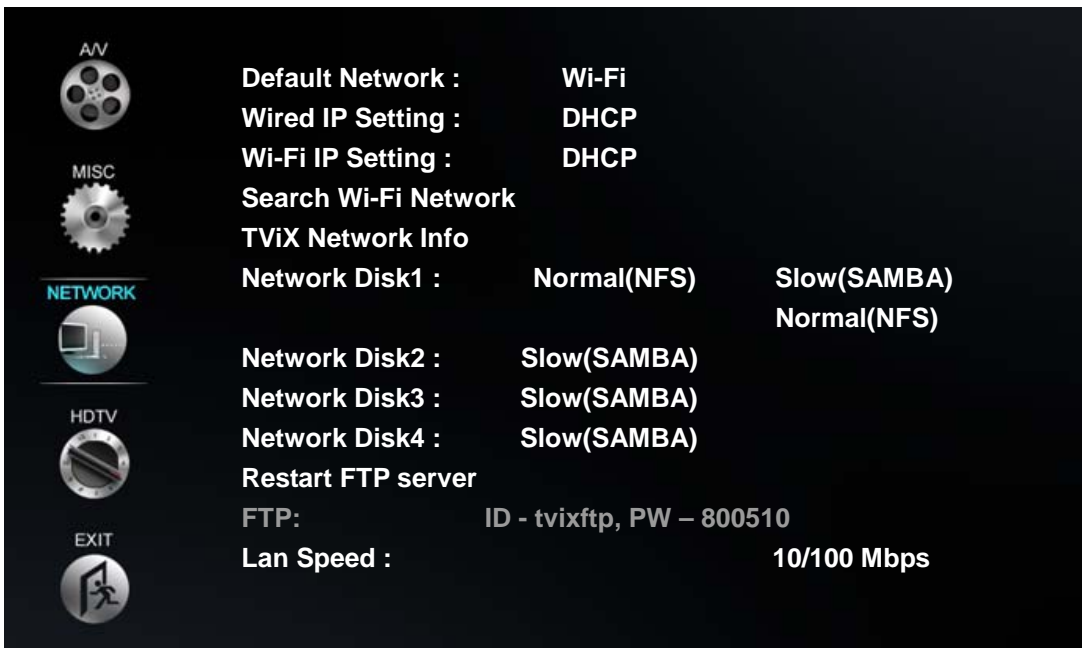


2 Select 'Control Panel > 'Network Connections', and select 'Status' properties by right clicking the mouse. After clicking the Support tab, press details, and you can see the Network connection details.

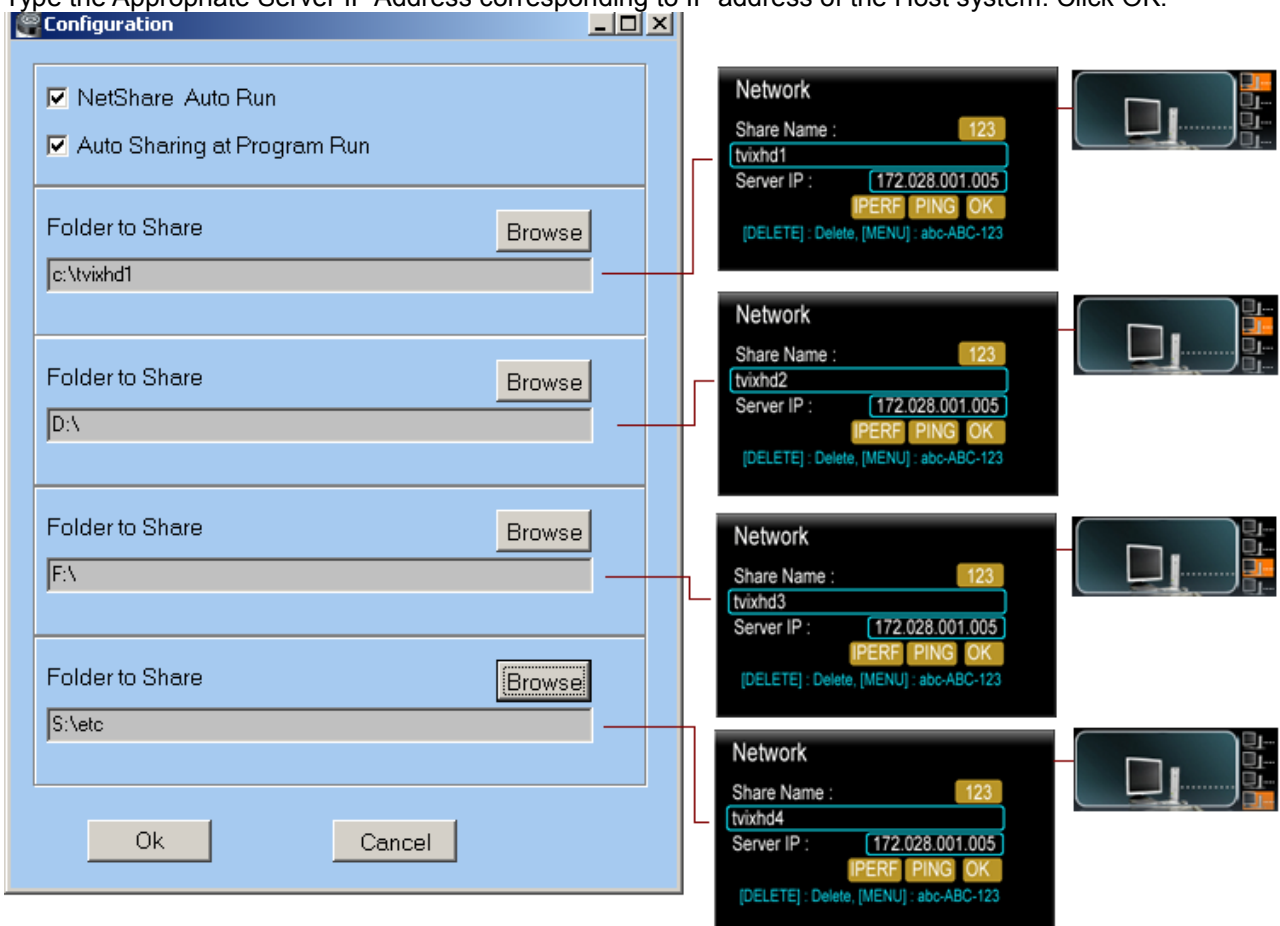
3 Write IP address, Subnet Mask, default gateway and DNS server. You must write different Host address like below Figure for TVIX IP and Server IP. (Ex: 192.168.001.106 and 192.168.001.104). Write DNS Server address Similar to Gateway address.



4 **Network Disk** : On the SET UP Feature .TVIX Network Info Will be displayed.



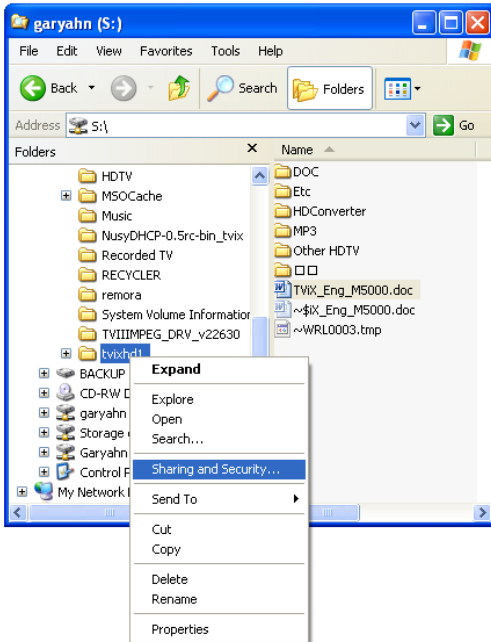
5 On Network Disk 1. Select Normal (NFS). A Window POPS UP as shown below figure. Type the appropriate Share Name as “tvixhd1”. Type the Appropriate Server IP Address corresponding to IP address of the Host system. Click OK.



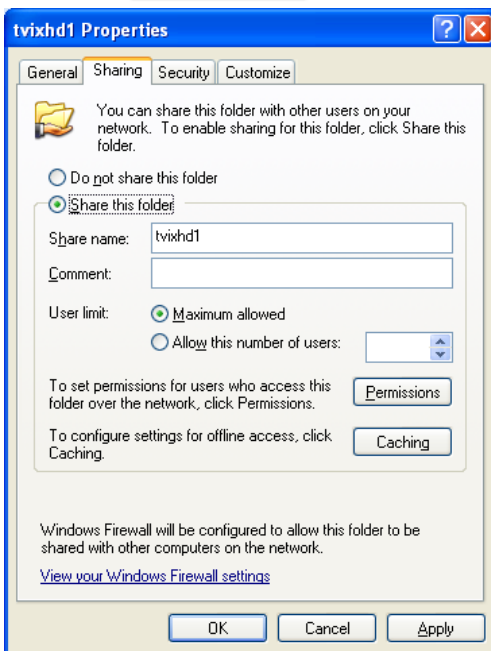
6 When the setting is successfully finished, you will be able to see the shared folder. Network Disk is supported up to 4 PC systems. You can see the partition on the network icon.

7 Press the Repeat button(or numeric 7 key) if you want to change to network driver. First Yellow Square Bracket is highlighted.Press ok.Will Display all the Folders and Content of Network disk 1. As this steps, you can change the network1 to network2 or network3 using Up/down key. Numeric 1,2,3,4 key are operated to change the network partition.

6.4.6 Set Network Configurations Under Windows XP (SAMBA mode)




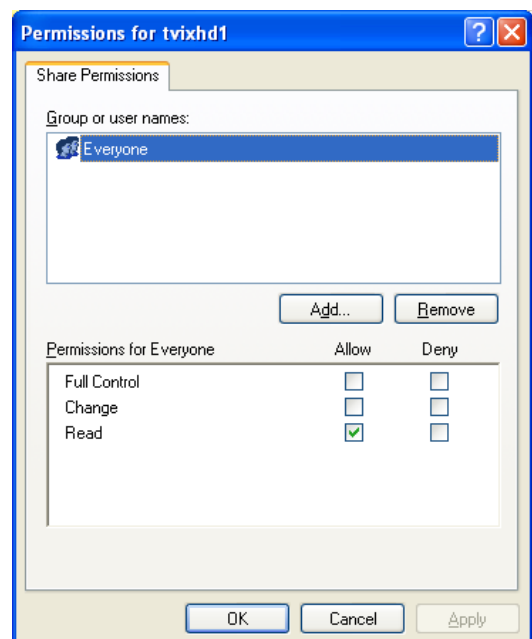
1 Select the folder you want to share. Right-click that folder and click 'Sharing and Security' in the popup menu.



2 Check 'Share this folder' on the network and type in the share name 'tvixhd1 (this is the only available one at the moment)'.

3 Use 'Everyone' if 'Everyone' is displayed, otherwise you don't have to change anything. Also, add 'Everyone' to the security tab.

4 After that, the shared folder will be displayed like the following picture. 



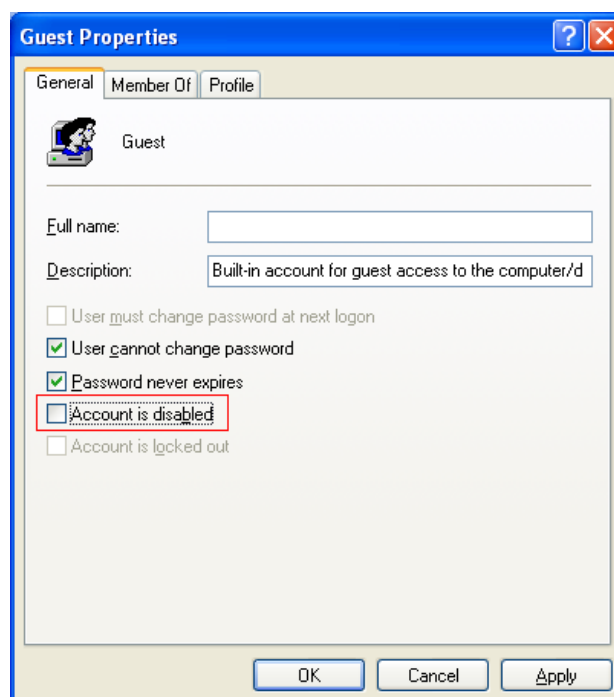
5 Move to 'Settings' > 'Control Panel' > 'Administrative Tools' > 'Computer Management' > 'Local Users and Groups' > 'Users', and double click 'Guest'.



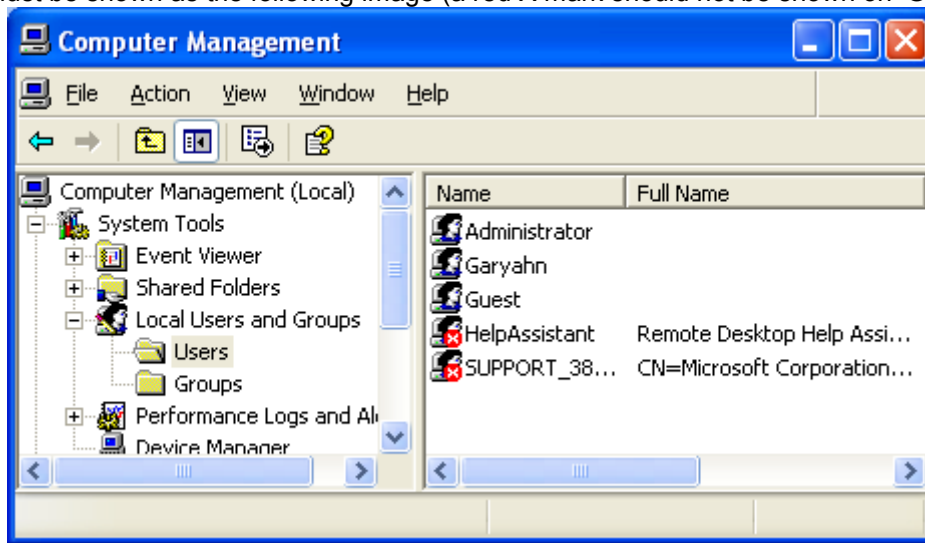
CAUTION

This is for Windows XP Professional. Windows XP Home users cannot see this window. If you cannot find 'Administrative Tools' in the Control Panel, click "Switch to classic view" in the upper-left corner of the screen.

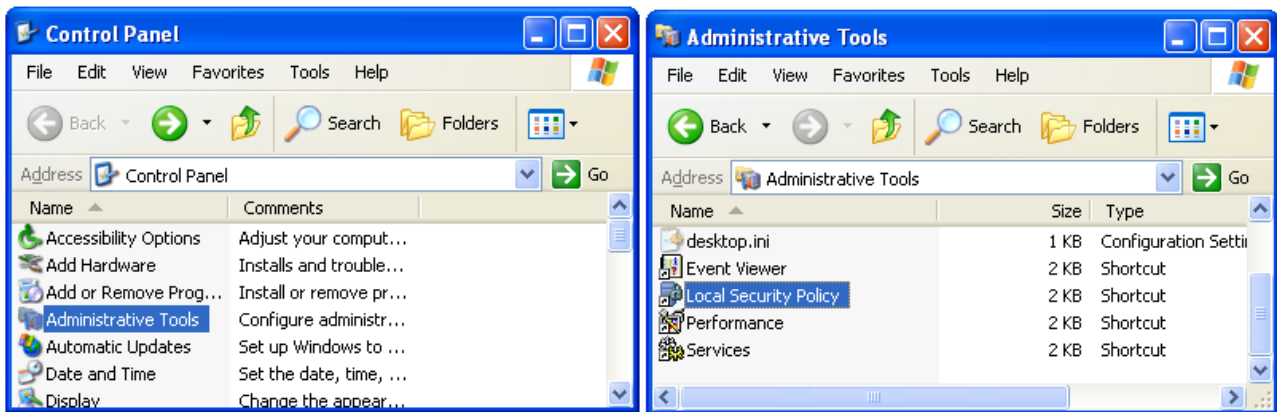
6 Uncheck 'Account is disabled'



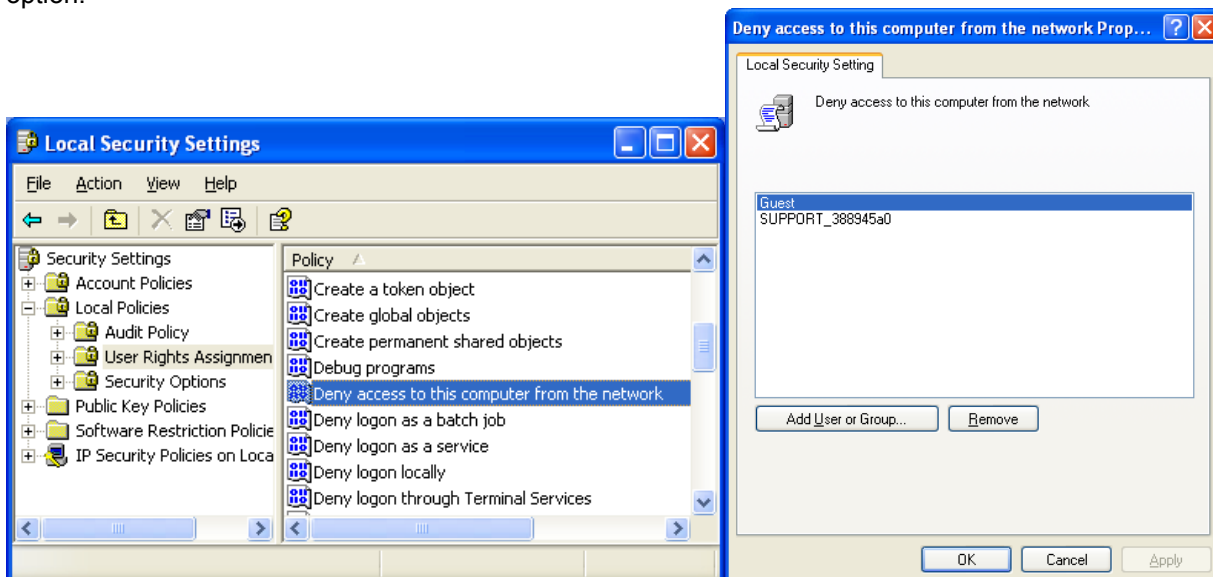
7 'GUEST' must be shown as the following image (a red X mark should not be shown on 'Guest').



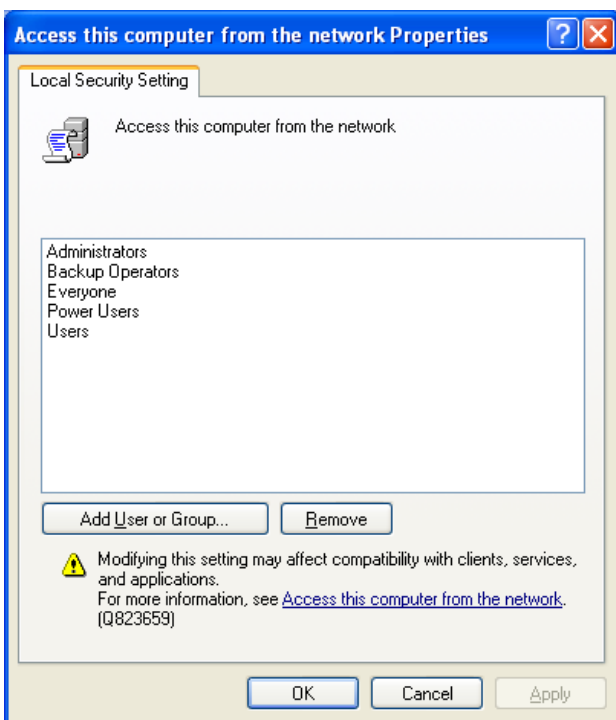
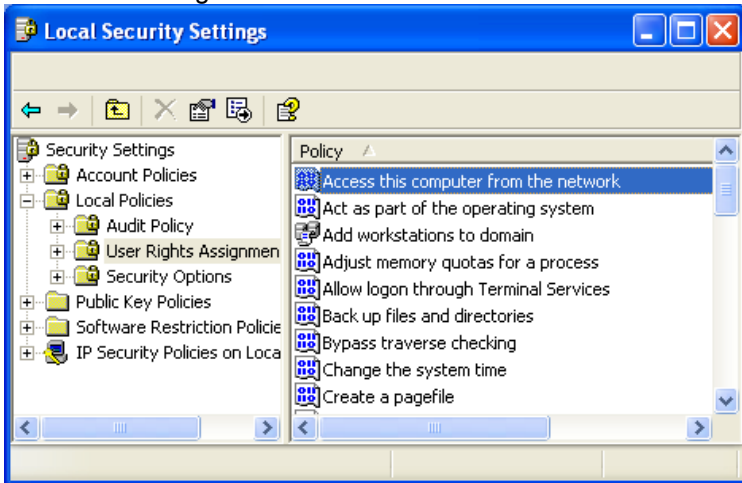
8 Move to 'Control Panel' > 'Network connections', and select 'Properties' s by right click on the mouse.



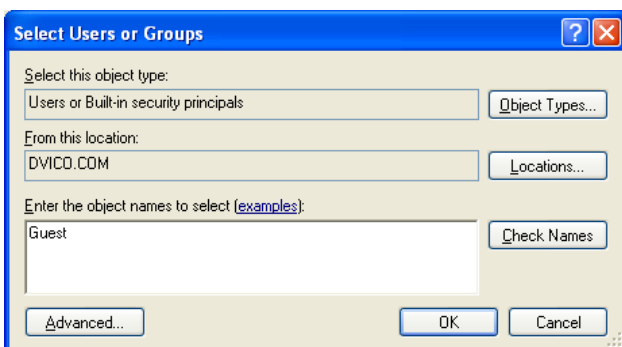
9 Remove "Guest" from the 'User Rights Assignment' > 'Deny access to this computer from the network' option.



10) Move to 'Access this computer from the network', and then select 'Properties' by right clicking the mouse or double clicking it.



11) Click on 'Add User or Group'



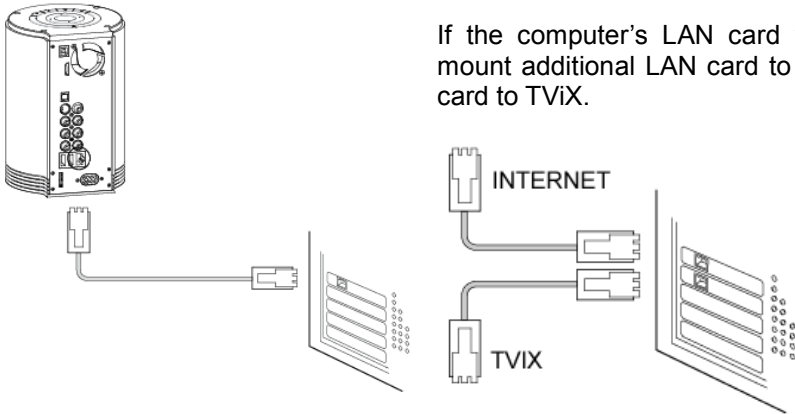
12) Type in "Guest" and then click on "OK" button.

13) Press OK, and Guest will be registered.



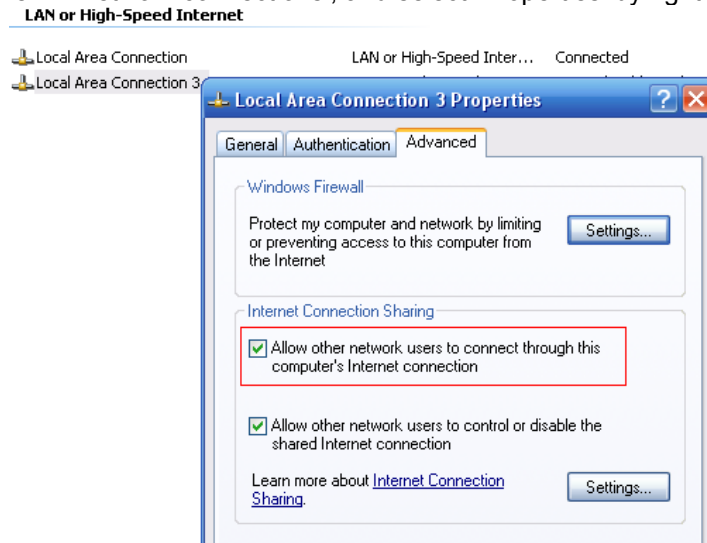
< When connecting Computer to TViX directly >

In this case, you have to use Cross LAN cable type generally..



If the computer's LAN card was connected to Internet line, you can mount additional LAN card to your PC and connect that additional LAN card to TViX.

1 Move to 'Control Panel' > 'Network connections', and select 'Properties' by right click on the mouse.

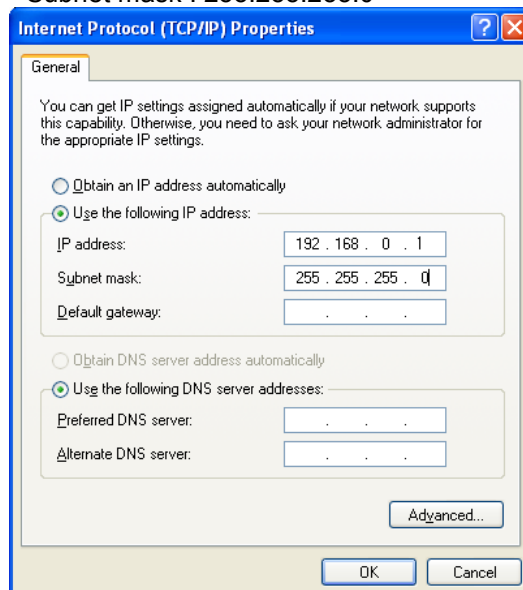


2 When Windows 2000 or XP, Check "Allow other network users to connect through this computer's internet connection"

3 Double click 'TCP/IP->LAN card' that you want to use on your computer. You must select the additional LAN card.

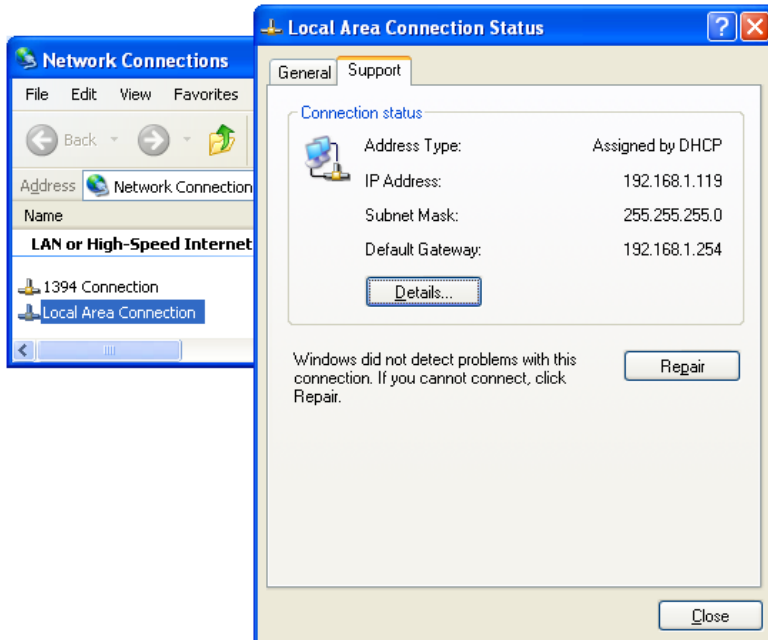
Check 'Specify an IP address', and write 'IP address' & 'Subnet mask' that you want to use.

Ex) IP address : 192.168.0.1 Subnet mask : 255.255.255.0



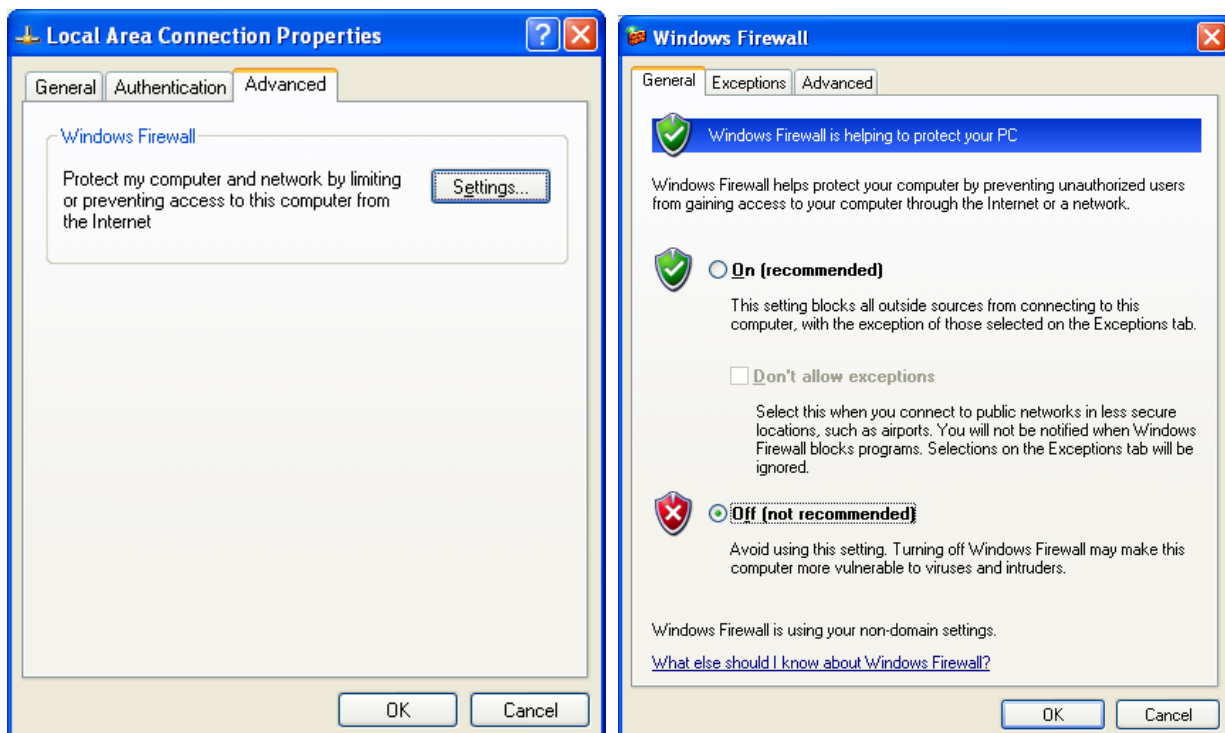
< When connecting with IP Router or Hub >

If you have already been assigned dynamic IP address from a DHCP Server or IP Router in your local area network, then no need to write a static IP address. Then obtain the automatically assigned IP address or write an IP address & Subnet mask that the DHCP Server or the IP Router provides. Select 'Control Panel' > 'Network Connections', and select 'Status' properties by right clicking the mouse. After clicking the Support tab, you should see an IP Address. (ex: 192.168.1.127)



< Disable Windows Firewall >

- 1 Move to 'Control Panel' > 'Network Connections', and select 'Properties' by right clicking on the mouse. Click on the 'Advanced' tab. Disable 'Internet Connection Firewall'.
- 2 If you use service pack 2, click on 'Settings' at 'Windows Firewall'.
- 3 Check 'Off' and then click 'OK'

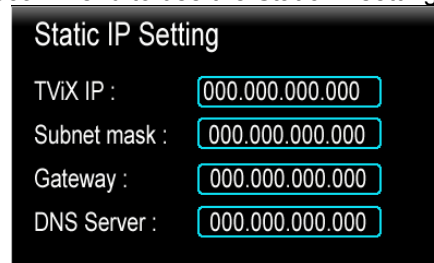
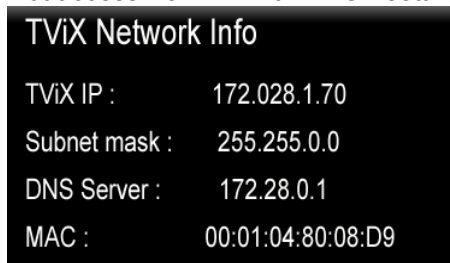


6.4.7 Setting Network Configurations in TViX HD

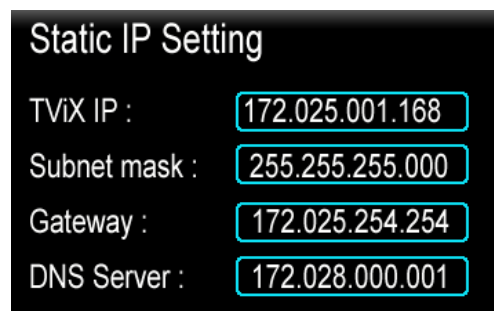
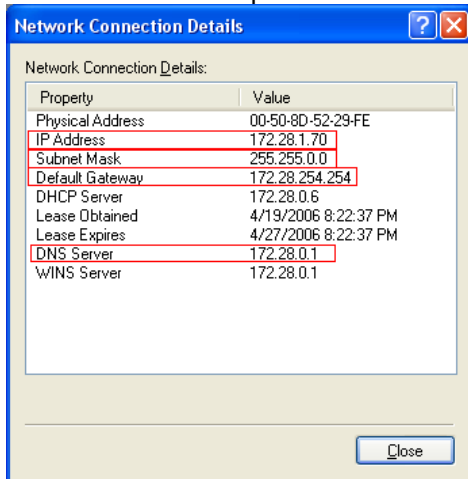


1 Press [SETUP] button on the remote. setup screen will be displayed. On that Set UP screen, select Network setting→Network disk and type the IP address in the Server IP. (ex: 172.28.1.70)
The default is DHCP and if you want to set Static IP, you can select and change Static IP on the IP setting.
If you have used the DHCP you don't need to assign the IP address because it will be assigned automatically.

2 If you cannot access via LAN with DHCP setting, we recommend to use the Static IP setting.



3 Select 'Control Panel > 'Network Connections', and select 'Status' properties by right clicking the mouse. After clicking the Support tab, press details, and you can see the Network connection details. Write IP address, Subnet Mask, default gateway and DNS server. You must write different IP address like below image. (ex: 172.28.1.70 → 172.28.1.168)
Forth address is different compared with PC's IP address.



4 When the setting is successfully finished, you will be able to see the 4 PC Tray Icons. Network Disk is supported up to 4 PC Tray system. You can see the partition on the network icon like below image.



5 You may check for detailed usage at the TViX website (www.tvix.co.kr/Eng)

6.4.8 Wireless Network

[Connect USB wireless module]

- 1 Connect the USB module into enclosed cradle after connecting the AP Router to a PC.
- 2 You should not connect the USB module to TViX without cradle. If you connect it by force, the TViX can be damaged.
- 3 Please refer to the TViX homepage(www.TViX.co.kr/Eng) for a list of compatible wireless devices.
- 4 Connect the cradle to the TViX-only after you have shut down the TViX Kit.

[Configure Wireless Network]

- 1 After booting, press SETUP-NETWORK- "Wi-Fi IP setting" and select DHCP or static IP.
To set the Wi-Fi IP, refer to **3.4.3 Setting Network Configurations in TViX HD**

- 2 After selecting DHCP, press "Search Wi-Fi Network" for searching your AP or AP router.

After the interval of searching, you can see following popup menu.
Select the AP you want to get connect with.



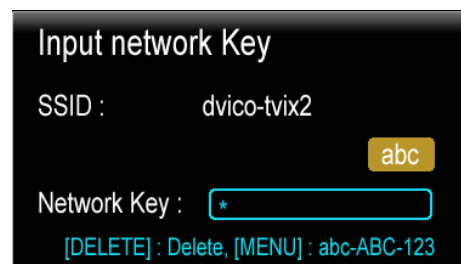
A red colored icon means the AP uses **WEP**(Wired Equivalent Privacy) and a blue colored icon means a non-WEP AP.

Currently supported of the WEP (Wired Equivalent Privacy) settings are the OPEN System and Shared System. Also, the WEP 64-Bit key is only supported and WPA (Wired Equivalent Privacy) and RADIUS (Remote Authentication Dial-In User Services) server are not supported.

※ **You have to configure the WEP setting of the AP using the AP's instruction in advance.**

- 3 Insert the network key using the remote's numeric keys. As you press the MENU button, the input mode for the remote will be circulated from a lower alphabet, an upper alphabet to a numerical input mode.

To delete a character, press the Capture/Delete button.

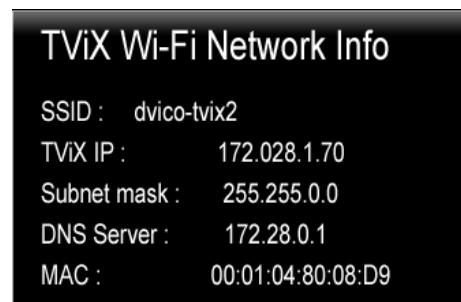


- 4 If you insert proper network key, you could see well-formed TViX Wi-Fi Network Info like following.

- 5 If the network key is wrong or the AP doesn't work with DHCP setting, you would see some-field-missed in TViX Wi-Fi Network Info POP UP. Those fields which you might always see are SSID and MAC

- 6 If you still have the problem after filling up correct key, please recheck your setting of AP or reconnect the USB port.

- 7 Network disk setting : This setting is same to the wired network setting. To configure the network disk, refer to TViX FAQ or manual of NetShare



※ Caution ※

- 1 If you connect to a secured AP, the network performance will be 10% lower than an unsecured AP.
- 2 In wireless connectivity connecting the Wireless USB to TViX Device. TViX kit needs to be powered off initially. and then Powered ON .Then on the Network setting Menu WIFI IP setting will be enabled
- 3 For the better Wi-Fi signals, you'd better adjust the position of AP and USB module
- 4 If you play high definition files over Wi-Fi, you will see the stutter. Also, depends on the environment, you may experience stuttering when you play DVD files.
- 5 If you use an USB Wi-Fi adapter with other USB device, it may not work properly.

* **If you want to change AP, you have to search the wireless network like Step 2.**

* **For the detailed wireless network guide, please refer to the TViX website(tvix.co.kr/eng)**

6.4.9 Using SAMBA Server

Using SAMBA Server, You can copy/move/delete files from PC to TViX box via LAN. SAMBA is supporting the internal hard disk only.

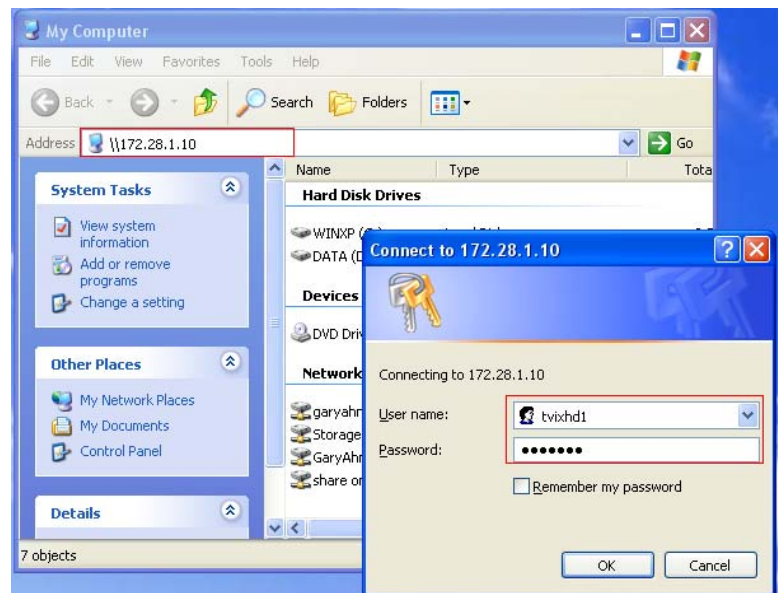
1 Press the TViX Network Info on the TViX-SETUP-NETWORK. And note down the TViX IP



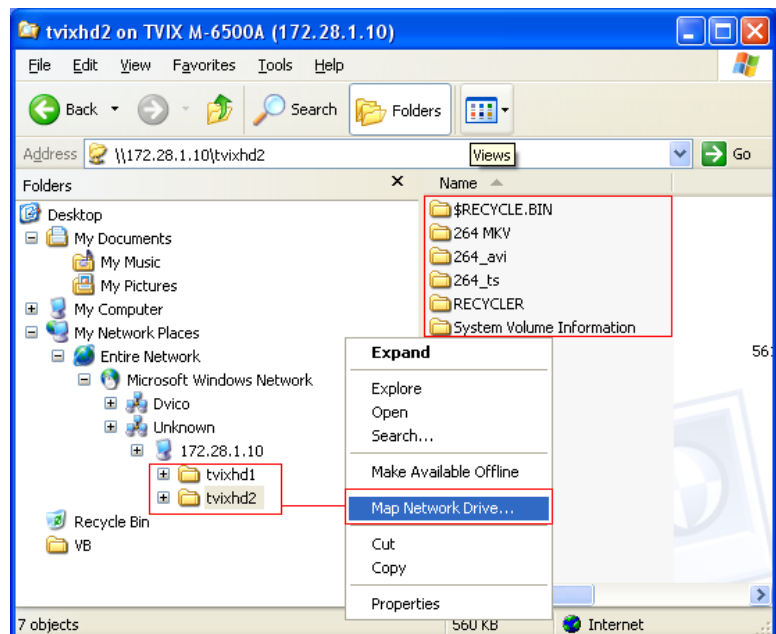
2 Click on Internet explorer, And then type the TViX IP as shown [\\172.28.1.10](http://172.28.1.10). A window pop up assign User Name and Password as shown below

User Name : tvixhd1

Password : tvixhd1

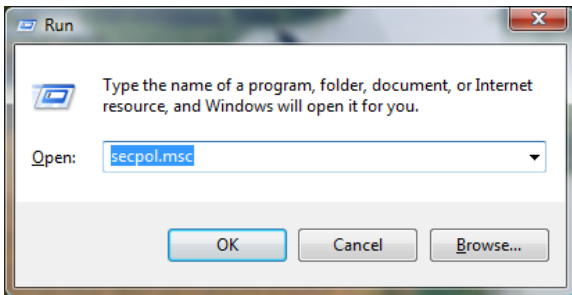


3 TViX hard disk content are displayed on the PC You can copy/move/delete files in this directory. After making the Network drive with this TViX drive, you can play the movie from TViX while downloading or uploading files.

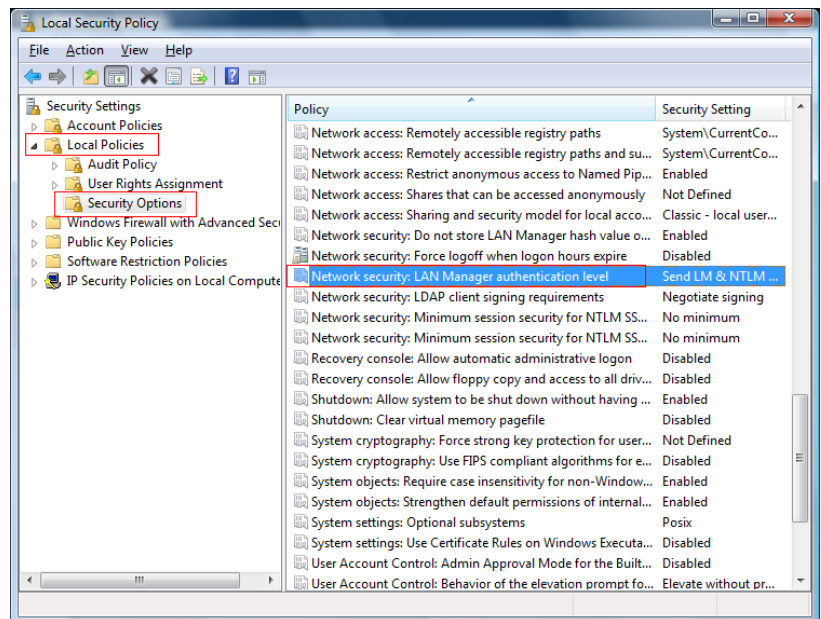


With Vista, you should configure the Network Security to use the SAMBA sever.

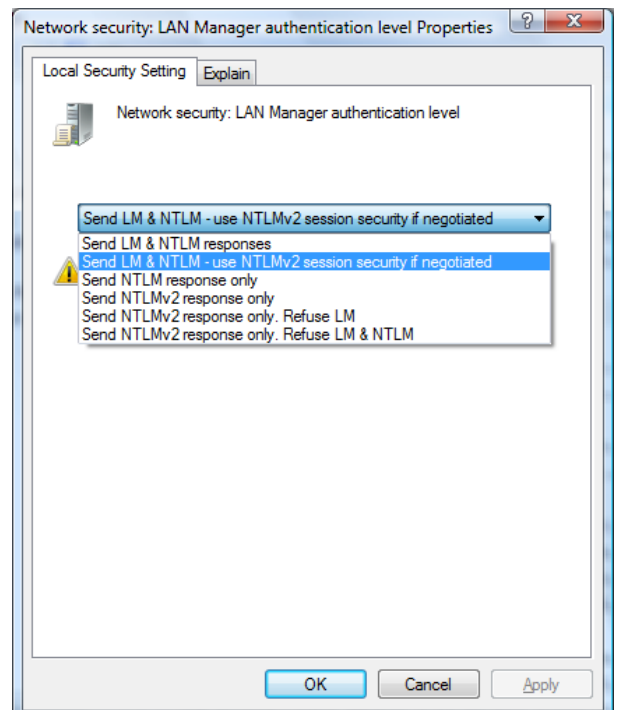
1 Open a console by clicking on "Start->Accessories->Command Prompt". Type in following command "secpol.msc".



2 Move to 'Security setting' > 'Local Policies' > 'Security Options' > 'Network Security: LAN Manager Authentication level' and double click this option.



3 Change LTLmv2 responses only to Send LM & NTLM - use NTLMv2 session security if negotiated and then click 'OK'.



4 To connect the SAMBA server, please refer to 6.4.9 'Using SAMBA server'.

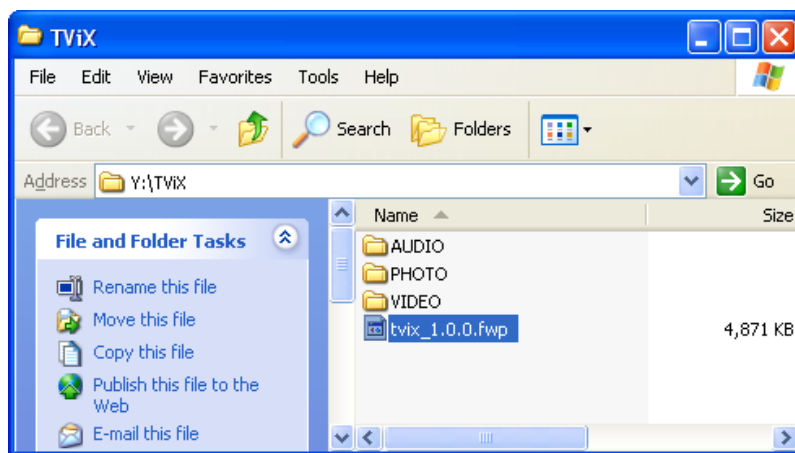
7 Firmware Upgrade

Firmware Version Check.

- 1 Connect the TViX HD to your TV and then turn on the TViX HD
- 2 Press the SETUP button on the top panel and the setup screen will be displayed.
- 3 Check the latest firmware version of TViX HD at www.tvix.co.kr
*** You'll be posted for any firmware updates or news if you fill out the customer registration form at <http://www.tvix.co.kr>

Downloading the Firmware.

- 1 Download the latest firmware from <http://www.tvix.co.kr> to your PC.
- 2 Connect the TViX HD to your PC with a USB and then turn it on.
- 3 Your system will recognize the TViX HD as an external hard drive.
- 4 Copy the latest firmware files into the root of the TViX HD hard drive or USB memory kit.
- 5 Turn off the TViX HD and bring it to your TV for firmware upgrading.

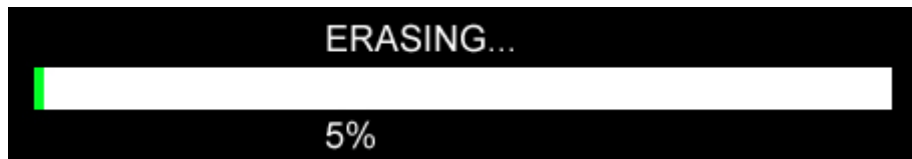


How to Upgrade the Firmware

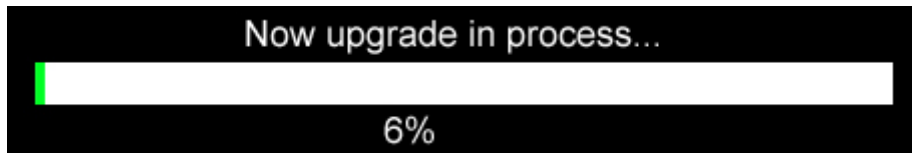
- 1 Connect the TViX HD to your TV.
- 2 Select the copied firmware file (ex: TViX1.0.1.fwp) and press OK on the remote to start upgrading.
- 3 The following screen will be displayed. Follow the instructions on the screen.



- Erasing the old firmware is in process.



- New firmware upgrade is in process (takes about 1 minute). When the upgrade is successfully finished, the TViX HD will reboot automatically.



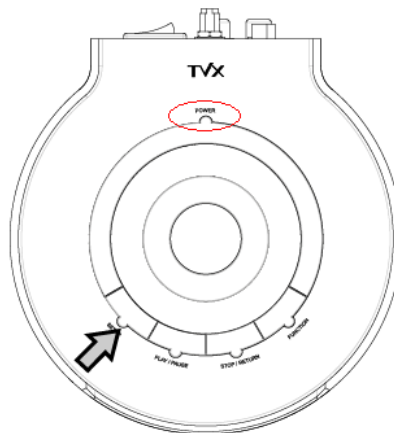
* If the firmware cannot be upgraded under normal mode, safe upgrade method can be followed.

< CAUTIONS: Safe Mode Upgrading >

Even if the TViX accidentally turns off during the firmware upgrade, the safe mode will enable the TViX to be re-upgraded.

Please follow the steps below:

- Connect the TViX to your PC with a USB and then turn it on.
- Make a tvixfw folder in your primary partition.
- Copy the latest firmware file into the tvixfw folder of the TViX hard drive.
- Press the SETUP button on the top panel and turn on the TViX HD Using power button.



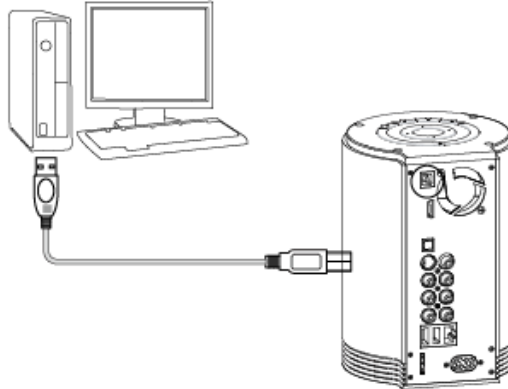
- The VFD will show the copied firmware version, like HDD1/FW 1:01:00.
- Press OK on the remote control to start upgrading.
- The VFD will show PRE when erasing the old firmware is in process.
- The VFD will show UPG when the new firmware upgrade is in process.
- The TViX will automatically reboot after the upgrade has been successfully finished.

8 Using USB Connection with the PC

TViX Kit along with its internal Hard disk can be connected to the PC. It acts as External device and works just like an external USB 2.0 hard drive when you connect it to your PC. And from the PC its TViX HD content can be accessed.

The USB cable has a different shape on both ends. We use USB 2.0 "A" Plug (male) type to "B" Plug(male) type.

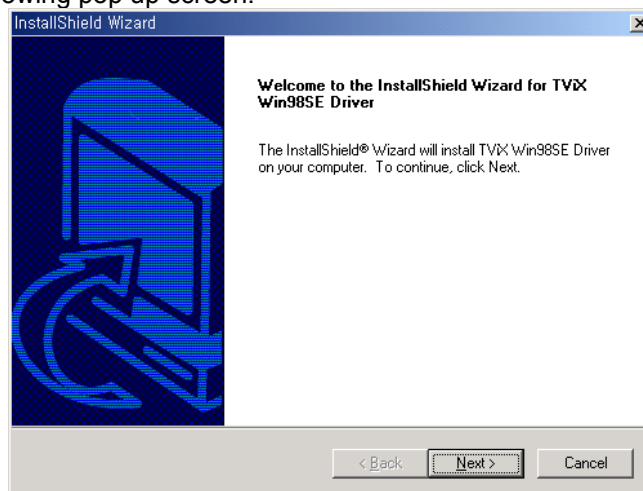
After connecting to your PC, turn the power on.



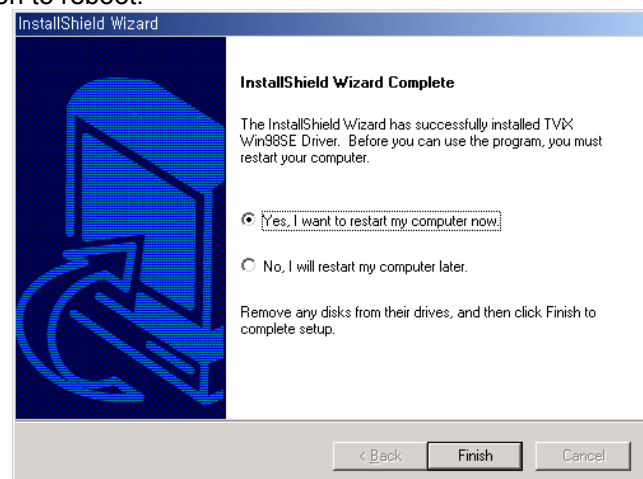
If you are a using Windows98SE user, you should download a USB storage driver from our web site www.tvix.co.kr before you connect your TViX HD with your system. You do not need to install the driver under Windows ME/2000/XP.

8.1 Windows 98SE Driver Installation

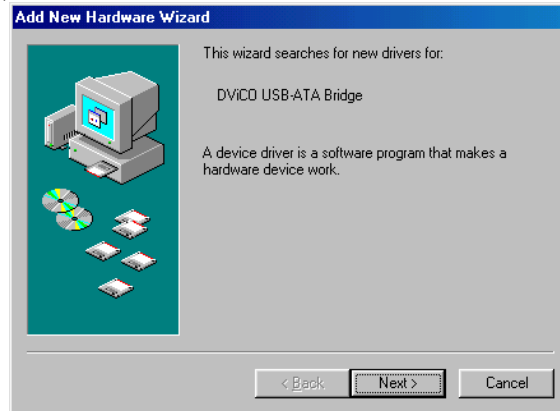
- 1 Run the setup.exe file stored inside the installation CD before connecting the TViX HD. Press "Next" on the following pop up screen.



- 2 Press the "Finish" button to reboot.



- 3 After rebooting the system, connect the TViX HD. Add New Hardware Wizard will automatically pop up.



- 4 Select "Search for the best driver for your device" menu and then press the Next button.



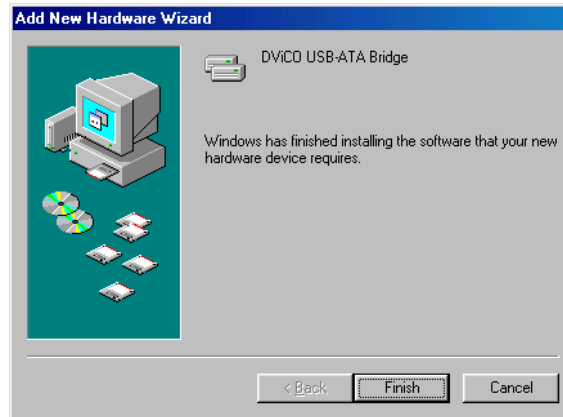
- 5 Do not change any of the menus. Just click "Next".



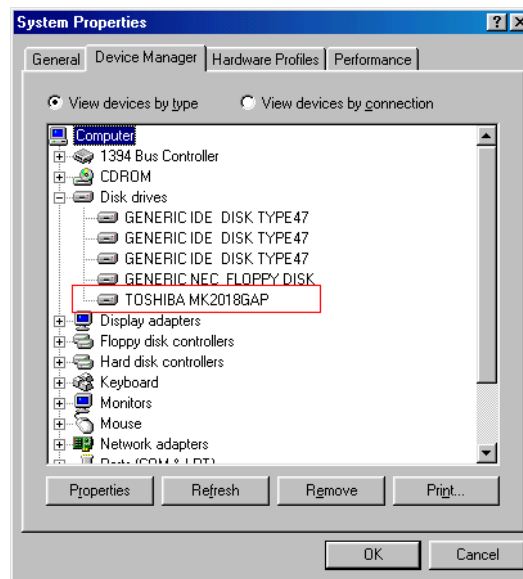
- 6 As shown in the pop up the system will find DVICO USB-ATA Bridge automatically. Press the "Next" button.



7 Press the “Finish” button and the driver installation will be finished.

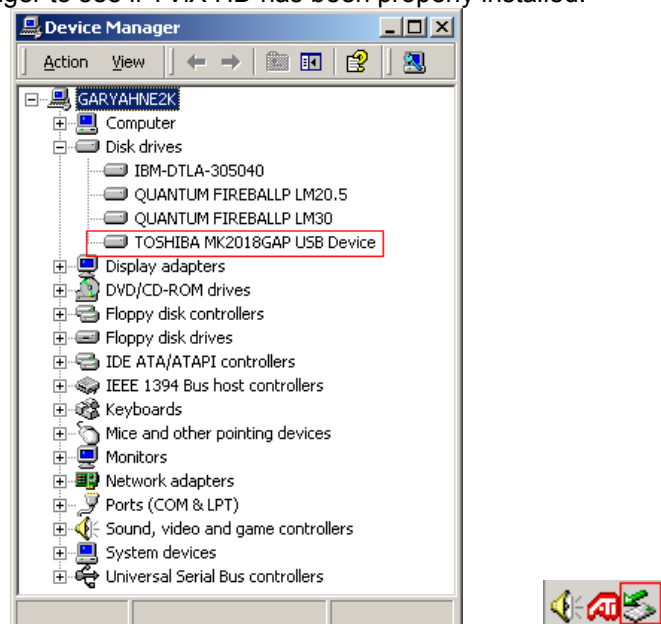


8 You will be able to see the disk drive inside the TViX HD in the Device Manager tab.



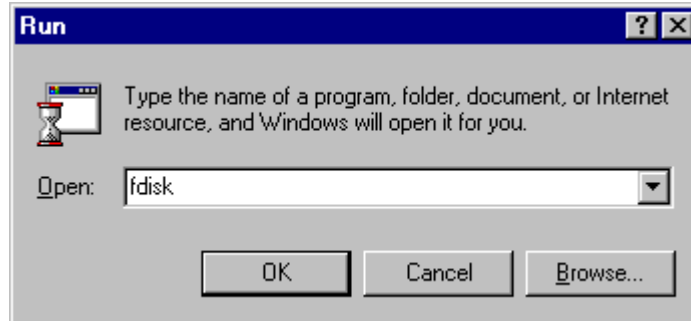
< TIPS >

Windows ME/2000/ XP will automatically provide the driver, so you do not have to install any extra software. Run Plug & Play when connecting the TViX HD. Right click the icon “My computer” then click → properties → hardware → device manager to see if TViX HD has been properly installed.

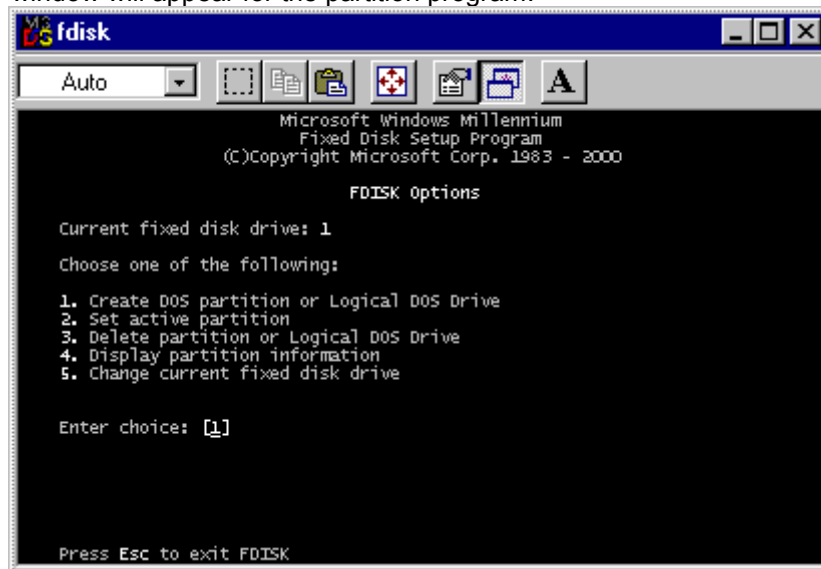


8.2 Making a Partition and Formatting the HDDs under Windows 98SE / ME

1 Click “Start” and select “Run” and the “Run” window will appear as shown below. Type “fdisk” in the text box of the “Run” window and then click the “OK” button.

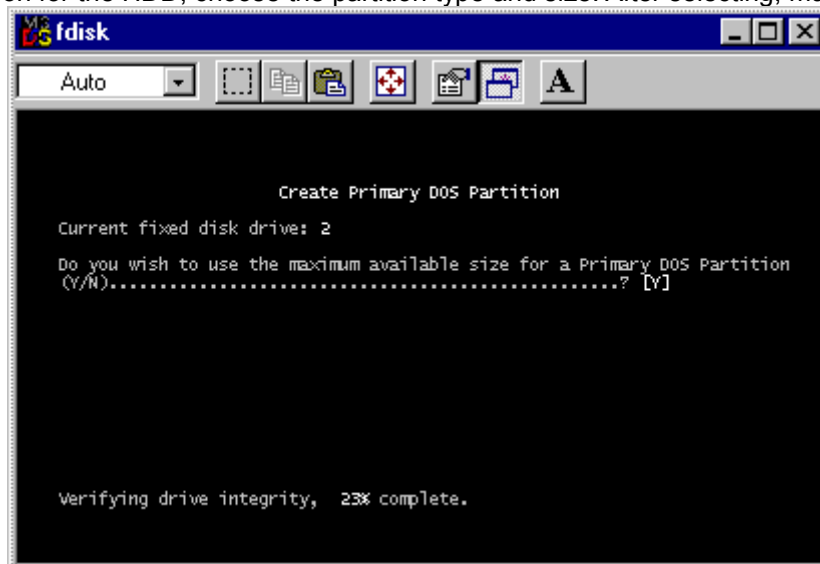


2 The following DOS window will appear for the partition program.

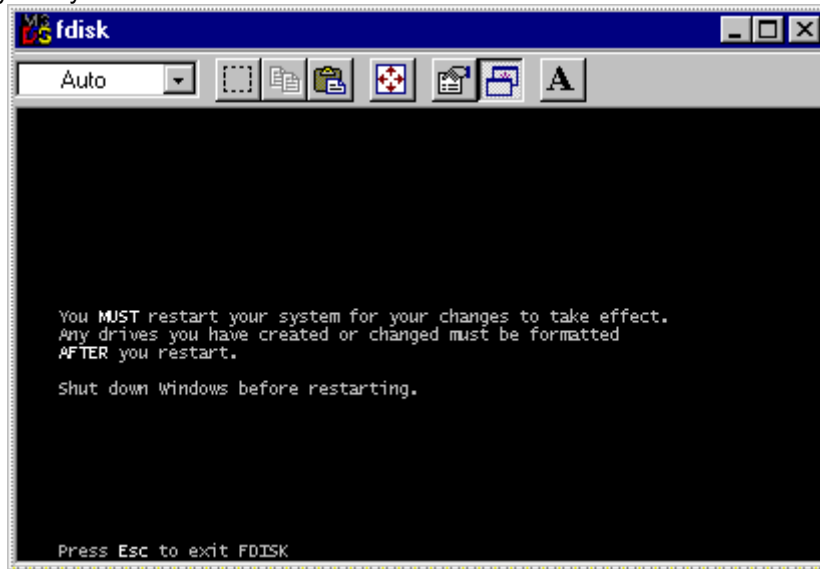


3 To make a new partition, choose number 5 to select the HDD in TViX HD.

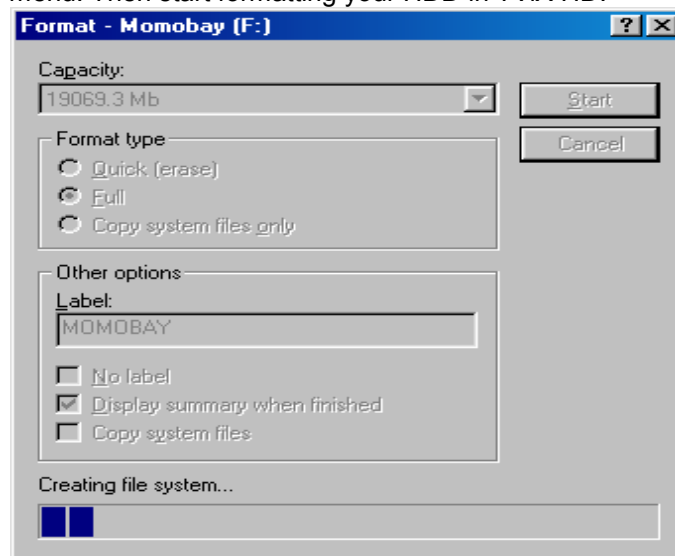
4 To make the partition for the HDD, choose the partition type and size. After selecting, make the partition.



5 After making partitions, do not reboot the system. Instead turn off the power of the TViX and then turn it back on. By doing so your system will reinitialize the TViX HD.

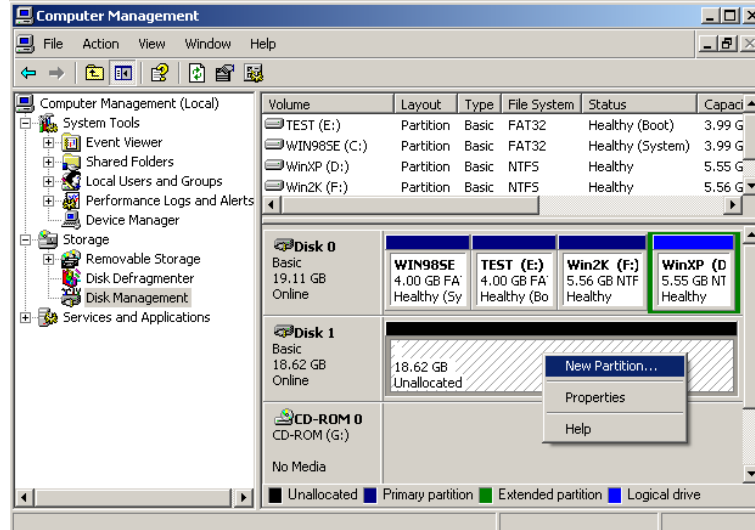


6 Run Window explorer and you will find the new disk created. Right click the new disk and choose "Format" from the pop up menu. Then start formatting your HDD in TViX HD.

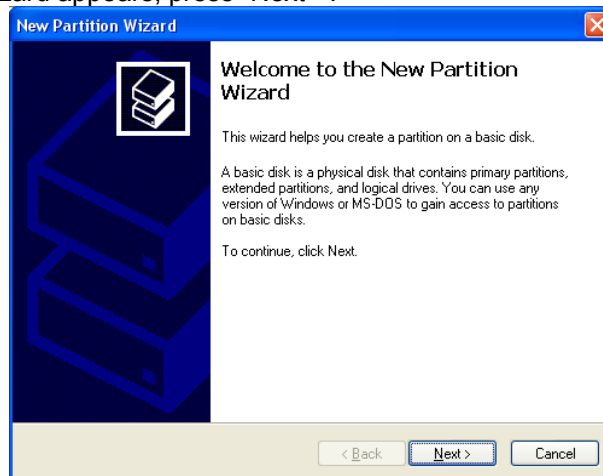


8.3 Making a Partition and Formatting the HDDs under Windows 2000 / XP/VISTA

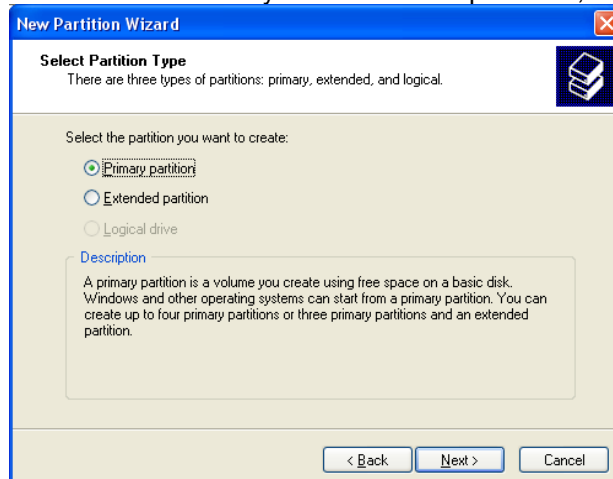
- 1 Under Windows 2000, you can make a partition and format the HDD using the Disk Manager utility.
- 2 Right click "My Computer" → Choose "manage" from the pop up menu and the "Computer Management" window will appear → choose "Disk Management" folder.
- 3 The disk list will appear on the right side of the "Computer Management" windows. Right click the TViX HDD from the list, and from the pop up menu choose "make partition" to create partitions on the chosen disk.



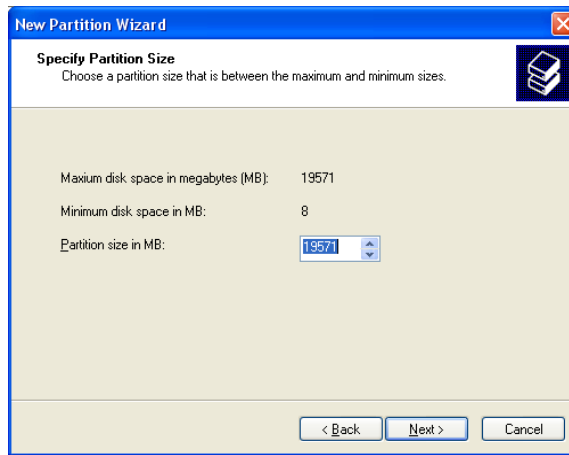
- 4 When the New Partition Wizard appears, press "Next>".



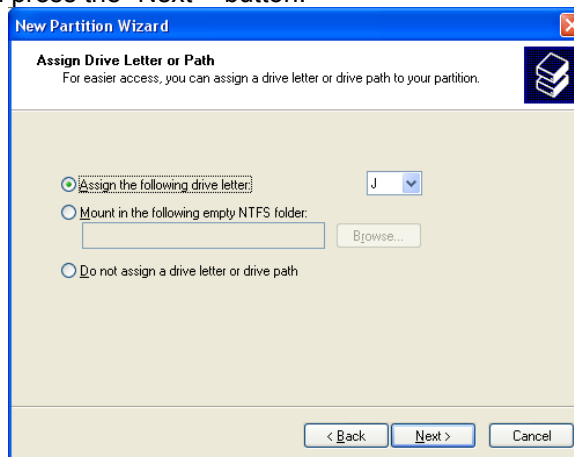
- 5 Choose the partition type and format the HDD. If you want several partitions, select Extended Partition.



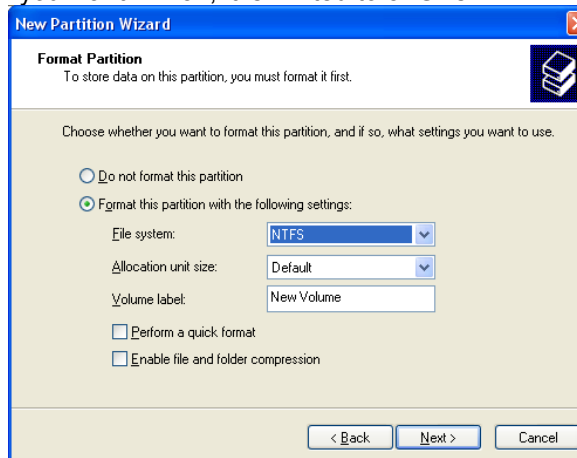
- 6 Select the partition size. If you want one partition, press "Next>". For FAT32, size is limited to 32000MB or under.



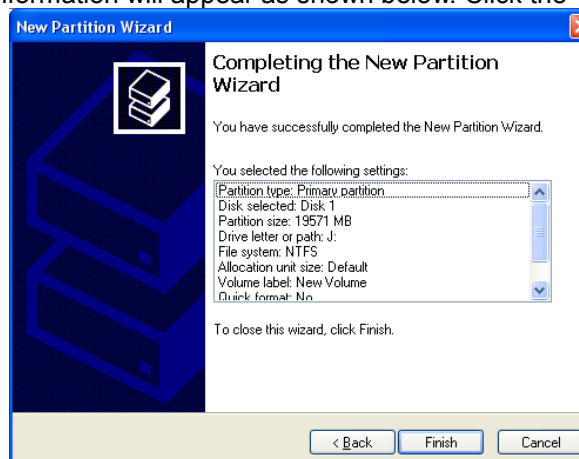
7 Select the Drive Letter. Then press the “Next>” button.




8 Select the partition Format. If you want FAT32, it is limited to 32GBs.

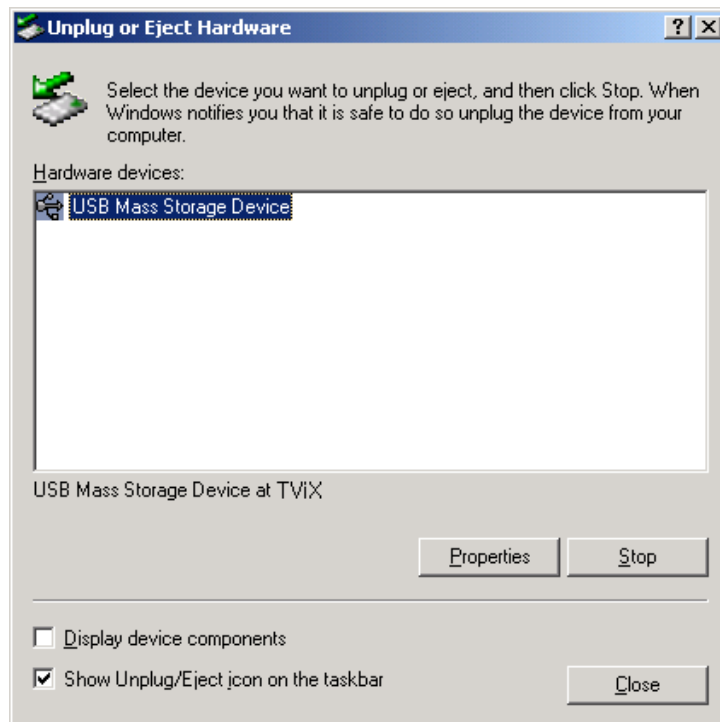


9 When completed, detailed information will appear as shown below. Click the “OK” button to finish.



8.4 Unplug or Eject Hardware

- 1 On the windows tray,  double click the hot swap icon. The “Unplug or Eject Hardware” window will appear. Press the Stop button if you want to unplug the device.



- 2 Press OK on “Stop a Hardware device” window.



- 3 Press OK and unplug the device.



9 Appendix - Technical Terms

HDMI

The High-Definition Multimedia Interface (HDMI) is an all-digital audio/video interface capable of transmitting uncompressed streams. HDMI is compatible with High-bandwidth Digital Content Protection (HDCP) Digital Rights Management technology.

HDMI provides an interface between any compatible digital audio/video source, such as a set-top box, a DVD player, a PC, a video game console, or an AV receiver and a compatible digital audio and/or video monitor, such as a digital television (DTV). In 2006, HDMI began to appear as a feature on prosumer, HDTV camcorders and even high-end digital still cameras.

DivX

DivX is the name of a revolutionary new video codec which is based on the new MPEG-4 compression standard for video. When you install a video codec on your system it basically works as an add-on to your system with instructions on how to compress/decompress video in that video format. Once you've installed the DivX codec on your system you will be able to play DivX movies using Windows Media Player or any other DivX-enabled player.

Despite the fact that DivX movies offer better compression and higher quality video than regular MPEG movies it takes more time to encode due to the incredible compression technology. The DivX codec makes it possible to compress/encode a full-length movie at near DVD-quality, which is small enough to fit on a single CD (700MB). The DivX video is usually combined with MP3 audio to produce both high quality video and audio.

XviD

XviD is the name of a new open-source video codec, which like the DivX is based on the new MPEG-4 compression standard for video. It's currently being developed by people from all over the world. When you install a video codec on your system, it basically works as an 'add-on' to your system with instructions on how to compress/decompress video in that video format. Once you've installed the XviD codec on your system you will be able to play XviD movies using Windows Media Player or any other XviD-enabled player.

MPEG

MPEG stands for Motion Picture Experts Group. This is the same group that made the MPEG-1 (used in VideoCDs), MPEG-2 (used in DVD and SuperVCDs and other high bandwidth systems) and MPEG-4 (ASF, DivX, WMV, low-mid bandwidth systems) standards. They are also responsible for MP3 (MPEG Audio Layer 3) and AAC audio compression standards.

VOB

VOB stands for Video Objects. DVD movies are stored in VOB files. Each VOB file has a number of video/audio/subpicture streams.

SUBPICTURE

A subpicture stream found in VOB files normally refers to the subtitles. Subtitles on DVDs are not stored as "text," but rather as a video stream. A subpicture stream is one that overlays on top of the main picture stream (ie. the movie), and on a DVD the subpicture stream can be turned on and off.

AVI

AVI stands for Audio Video Interleave. AVI is a file format, like MP3 or JPG. But unlike these formats, AVI is a container format, meaning it can contain video/audio compressed files using many different combinations of codecs. Therefore, while MP3 and JPG can only contain a certain kind of compression (MPEG Audio Layer 3 and JPEG), AVI can contain many different kinds of compression (eg. DivX video + WMA audio or Indeo video + PCM audio) as long as a codec is available for encoding/decoding. All AVI files look the same on the "outside", but on the "inside", they may be completely different. Almost all tools on this site are not just DivX tools, but also AVI tools, so will work with many other codecs.

AC3

Initially known as Audio Coding 3, AC3 is a synonym for Dolby Digital these days. Dolby Digital is an advanced audio compression technology allowing to encode up to 6 separate channels at bit-rates up to 448kbit/s. For more information please check out the Dolby website.

DTS

By supplying film studios with outstanding techniques for delivering soundtracks to an attentive audience, DTS digital sound is now featured on virtually 100% of major Hollywood releases. Although the technology used for motion pictures differs from that featured in consumer and professional audio music and home theater systems, their DTS heritage means end users can enjoy sound that closely matches the original.

WMA

WMA stands for Windows Media Audio. It is a proprietary format developed by Microsoft for audio streaming and compression. WMA files, theoretically, has double the compression rate of MP3s, although this is debatable.

Ogg Vorbis

Ogg Vorbis is a new audio compression format. It is roughly comparable to other formats used to store and play digital music, such as MP3, VQF, AAC, and other digital audio formats. It is different from these other formats because it is completely free, open, and unpatented.

Ogg Vorbis has been designed to completely replace all proprietary, patented audio formats. That means that you can encode all your music or audio content in Vorbis and never look back.

480p

480 progressive; form of standard-definition digital television (SDTV) comparable to VGA computer displays but not considered high-definition television (HDTV), though 480p is discernibly cleaner and slightly sharper than analog television. The native resolution of DVD is 480p, but that resolution can be seen only if a DVD player outputs a progressive-scan signal and the DTV has progressive-scan or component-video inputs; it is also known as EDTV.

480i

480 interlaced; form of standard-definition digital television (SDTV) that approximates the quality of analog television but not considered high-definition television (HDTV). Even though the native resolution of DVDs is 480p, they are viewed at 480i on an NTSC analog television.

720p

720 progressive. One of two currently used formats designated as high-definition television in the ATSC DTV standard, this technology comprises 720 vertical pixels and 1,280 horizontal pixels. The p stands for progressive, as opposed to interlaced, scanning, which is used in the other accepted HDTV standard, known as 1080i. Contrary to myth, 720p is not inferior to 1080i; 720p has fewer lines but also has the advantages of progressive scanning and a constant vertical resolution of 720 lines, making it better able to handle motion.

1080i

1080 interlaced; one of two formats designated as high-definition television in the ATSC DTV standard, with 1,080 vertical pixels by 1,920 horizontal pixels. The i stands for interlaced, as opposed to progressive scanning, used in the second HDTV standard, 720p. Contrary to myth, 1080i is not superior to 720p; 1080i has more scanning lines but also suffers the disadvantages of interlaced scanning.

NTSC

The NTSC (National Television Standards Committee) was responsible for developing, in 1953, a set of standard protocol for television (TV) broadcast transmission and reception in the United States. Two other standards - Phase Alternation Line (PAL) and Sequential Couleur avec Memoire (SECAM) - are used in other parts of the world. The NTSC standards have not changed significantly since their inception, except for the addition of new parameters for color signals. NTSC signals are not directly compatible with computer systems.

An NTSC TV image has 525 horizontal lines per frame (complete screen image). These lines are scanned from left to right and from top to bottom. Every other line is skipped. Thus it takes two screen scans to complete a frame: one scan for the odd-numbered horizontal lines, and another scan for the even-numbered lines. Each half-frame screen scan takes approximately 1/60 of a second; a complete frame is scanned every 1/30 second. This alternate-line scanning system is known as interlacing.

PAL

Phase Alternation Line (PAL) is the analog television display standard that is used in Europe and certain other parts of the world. PAL is one of the three major TV standards together with the American National Television Systems Committee(NTSC) color television system and the French Sequential Couleur avec Memoire (SECAM). NTSC is also used in Japan. SECAM is used in countries of the former Soviet Union. Like SECAM, PAL scans the cathode ray tube (CRT) horizontally 625 times to form the video image. NTSC scans 525 lines. Color definitions between the systems vary slightly.

10 GNU General Public License

DVICO Co., Ltd is using a part of Free Software code under the GNU General Public License in operating TViX player. This General Public License applies to most of the Free Software Foundation's code and to any other program whose authors commit by using it. The Free Software is copyrighted by Free Software Foundation, Inc. and the program is licensed "As is" without warranty of any kind. Users are free to download the base source code of the dvico TViX players at the following Address: www.tvix.co.kr/gpl The source code can be sent to your address via airmail for a charge of actual expense executed. Please contact us at sales@dvico.com

[GNU GENERAL PUBLIC LICENSE](#)

Version 2, June 1991

Copyright (C) 1989, 1991 Free Software Foundation, Inc.
51 Franklin Street, Fifth Floor, Boston, MA 02110-1301, USA

Everyone is permitted to copy and distribute verbatim copies of this license document, but changing it is not allowed.

[Preamble](#)

The licenses for most software are designed to take away your freedom to share and change it. By contrast, the GNU General Public License is intended to guarantee your freedom to share and change free software--to make sure the software is free for all its users. This General Public License applies to most of the Free Software Foundation's software and to any other program whose authors commit to using it. (Some other Free Software Foundation software is covered by the GNU Lesser General Public License instead.) You can apply it to your programs, too.

When we speak of free software, we are referring to freedom, not price. Our General Public Licenses are designed to make sure that you have the freedom to distribute copies of free software (and charge for this service if you wish), that you receive source code or can get it if you want it, that you can change the software or use pieces of it in new free programs; and that you know you can do these things.

To protect your rights, we need to make restrictions that forbid anyone to deny you these rights or to ask you to surrender the rights. These restrictions translate to certain responsibilities for you if you distribute copies of the software, or if you modify it.

For example, if you distribute copies of such a program, whether gratis or for a fee, you must give the recipients all the rights that you have. You must make sure that they, too, receive or can get the source code. And you must show them these terms so they know their rights.

We protect your rights with two steps: (1) copyright the software, and (2) offer you this license which gives you legal permission to copy, distribute and/or modify the software.

Also, for each author's protection and ours, we want to make certain that everyone understands that there is no warranty for this free software. If the software is modified by someone else and passed on, we want its recipients to know that what they have is not the original, so that any problems introduced by others will not reflect on the original authors' reputations.

Finally, any free program is threatened constantly by software patents. We wish to avoid the danger that redistributors of a free program will individually obtain patent licenses, in effect making the program proprietary. To prevent this, we have made it clear that any patent must be licensed for everyone's free use or not licensed at all.

The precise terms and conditions for copying, distribution and modification follow.

TERMS AND CONDITIONS FOR COPYING, DISTRIBUTION AND MODIFICATION

0. This License applies to any program or other work which contains a notice placed by the copyright holder saying it may be distributed under the terms of this General Public License. The "Program", below, refers to any such program or work, and a "work based on the Program" means either the Program or any derivative work under copyright law: that is to say, a work containing the Program or a portion of it, either verbatim or with modifications and/or translated into another language. (Hereinafter, translation is included without limitation in the term "modification".) Each licensee is addressed as "you".

Activities other than copying, distribution and modification are not covered by this License; they are outside its scope. The act of running the Program is not restricted, and the output from the Program is covered only if its contents constitute a work based on the Program (independent of having been made by running the Program). Whether that is true depends on what the Program does.

1. You may copy and distribute verbatim copies of the Program's source code as you receive it, in any medium, provided that you conspicuously and appropriately publish on each copy an appropriate copyright notice and disclaimer of warranty; keep intact all the notices that refer to this License and to the absence of any warranty; and give any other recipients of the Program a copy of this License along with the Program.

You may charge a fee for the physical act of transferring a copy, and you may at your option offer warranty protection in exchange for a fee.

2. You may modify your copy or copies of the Program or any portion of it, thus forming a work based on the Program, and copy and distribute such modifications or work under the terms of Section 1 above, provided that you also meet all of these conditions:

- a)** You must cause the modified files to carry prominent notices stating that you changed the files and the date of any change.
- b)** You must cause any work that you distribute or publish, that in whole or in part contains or is derived from the Program or any part thereof, to be licensed as a whole at no charge to all third parties under the terms of this License.
- c)** If the modified program normally reads commands interactively when run, you must cause it, when started running for such interactive use in the most ordinary way, to print or display an announcement including an appropriate copyright notice and a notice that there is no warranty (or else, saying that you provide a warranty) and that users may redistribute the program under these conditions, and telling the user how to view a copy of this License. (Exception: if the Program itself is interactive but does not normally print such an announcement, your work based on the Program is not required to print an announcement.)

These requirements apply to the modified work as a whole. If identifiable sections of that work are not derived from the Program, and can be reasonably considered independent and separate works in themselves, then this License, and its terms, do not apply to those sections when you distribute them as separate works. But when you distribute the same sections as part of a whole which is a work based on the Program, the distribution of the whole must be on the terms of this License, whose permissions for other licensees extend to the entire whole, and thus to each and every part regardless of who wrote it.

Thus, it is not the intent of this section to claim rights or contest your rights to work written entirely by you; rather, the intent is to exercise the right to control the distribution of derivative or collective works based on the Program.

In addition, mere aggregation of another work not based on the Program with the Program (or with a work based on the Program) on a volume of a storage or distribution medium does not bring the other work under the scope of this License.

3. You may copy and distribute the Program (or a work based on it, under Section 2) in object code or executable form under the terms of Sections 1 and 2 above provided that you also do one of the following:

- a)** Accompany it with the complete corresponding machine-readable source code, which must be distributed under the terms of Sections 1 and 2 above on a medium customarily used for software interchange; or,

- b)** Accompany it with a written offer, valid for at least three years, to give any third party, for a charge no more than your cost of physically performing source distribution, a complete machine-readable copy of the corresponding source code, to be distributed under the terms of Sections 1 and 2 above on a medium customarily used for software interchange; or,
- c)** Accompany it with the information you received as to the offer to distribute corresponding source code. (This alternative is allowed only for noncommercial distribution and only if you received the program in object code or executable form with such an offer, in accord with Subsection b above.)

The source code for a work means the preferred form of the work for making modifications to it. For an executable work, complete source code means all the source code for all modules it contains, plus any associated interface definition files, plus the scripts used to control compilation and installation of the executable. However, as a special exception, the source code distributed need not include anything that is normally distributed (in either source or binary form) with the major components (compiler, kernel, and so on) of the operating system on which the executable runs, unless that component itself accompanies the executable.

If distribution of executable or object code is made by offering access to copy from a designated place, then offering equivalent access to copy the source code from the same place counts as distribution of the source code, even though third parties are not compelled to copy the source along with the object code.

4. You may not copy, modify, sublicense, or distribute the Program except as expressly provided under this License. Any attempt otherwise to copy, modify, sublicense or distribute the Program is void, and will automatically terminate your rights under this License. However, parties who have received copies, or rights, from you under this License will not have their licenses terminated so long as such parties remain in full compliance.

5. You are not required to accept this License, since you have not signed it. However, nothing else grants you permission to modify or distribute the Program or its derivative works. These actions are prohibited by law if you do not accept this License. Therefore, by modifying or distributing the Program (or any work based on the Program), you indicate your acceptance of this License to do so, and all its terms and conditions for copying, distributing or modifying the Program or works based on it.

6. Each time you redistribute the Program (or any work based on the Program), the recipient automatically receives a license from the original licensor to copy, distribute or modify the Program subject to these terms and conditions. You may not impose any further restrictions on the recipients' exercise of the rights granted herein. You are not responsible for enforcing compliance by third parties to this License.

7. If, as a consequence of a court judgment or allegation of patent infringement or for any other reason (not limited to patent issues), conditions are imposed on you (whether by court order, agreement or otherwise) that contradict the conditions of this License, they do not excuse you from the conditions of this License. If you cannot distribute so as to satisfy simultaneously your obligations under this License and any other pertinent obligations, then as a consequence you may not distribute the Program at all. For example, if a patent license would not permit royalty-free redistribution of the Program by all those who receive copies directly or indirectly through you, then the only way you could satisfy both it and this License would be to refrain entirely from distribution of the Program.

If any portion of this section is held invalid or unenforceable under any particular circumstance, the balance of the section is intended to apply and the section as a whole is intended to apply in other circumstances.

It is not the purpose of this section to induce you to infringe any patents or other property right claims or to contest validity of any such claims; this section has the sole purpose of protecting the integrity of the free software distribution system, which is implemented by public license practices. Many people have made generous contributions to the wide range of software distributed through that system in reliance on consistent application of that system; it is up to the author/donor to decide if he or she is willing to distribute software through any other system and a licensee cannot impose that choice.

This section is intended to make thoroughly clear what is believed to be a consequence of the rest of this License.

8. If the distribution and/or use of the Program is restricted in certain countries either by patents or by copyrighted interfaces, the original copyright holder who places the Program under this License may add an

explicit geographical distribution limitation excluding those countries, so that distribution is permitted only in or among countries not thus excluded. In such case, this License incorporates the limitation as if written in the body of this License.

9. The Free Software Foundation may publish revised and/or new versions of the General Public License from time to time. Such new versions will be similar in spirit to the present version, but may differ in detail to address new problems or concerns.

Each version is given a distinguishing version number. If the Program specifies a version number of this License which applies to it and "any later version", you have the option of following the terms and conditions either of that version or of any later version published by the Free Software Foundation. If the Program does not specify a version number of this License, you may choose any version ever published by the Free Software Foundation.

10. If you wish to incorporate parts of the Program into other free programs whose distribution conditions are different, write to the author to ask for permission. For software which is copyrighted by the Free Software Foundation, write to the Free Software Foundation; we sometimes make exceptions for this. Our decision will be guided by the two goals of preserving the free status of all derivatives of our free software and of promoting the sharing and reuse of software generally.

NO WARRANTY

11. BECAUSE THE PROGRAM IS LICENSED FREE OF CHARGE, THERE IS NO WARRANTY FOR THE PROGRAM, TO THE EXTENT PERMITTED BY APPLICABLE LAW. EXCEPT WHEN OTHERWISE STATED IN WRITING THE COPYRIGHT HOLDERS AND/OR OTHER PARTIES PROVIDE THE PROGRAM "AS IS" WITHOUT WARRANTY OF ANY KIND, EITHER EXPRESSED OR IMPLIED, INCLUDING, BUT NOT LIMITED TO, THE IMPLIED WARRANTIES OF MERCHANTABILITY AND FITNESS FOR A PARTICULAR PURPOSE. THE ENTIRE RISK AS TO THE QUALITY AND PERFORMANCE OF THE PROGRAM IS WITH YOU. SHOULD THE PROGRAM PROVE DEFECTIVE, YOU ASSUME THE COST OF ALL NECESSARY SERVICING, REPAIR OR CORRECTION.

12. IN NO EVENT UNLESS REQUIRED BY APPLICABLE LAW OR AGREED TO IN WRITING WILL ANY COPYRIGHT HOLDER, OR ANY OTHER PARTY WHO MAY MODIFY AND/OR REDISTRIBUTE THE PROGRAM AS PERMITTED ABOVE, BE LIABLE TO YOU FOR DAMAGES, INCLUDING ANY GENERAL, SPECIAL, INCIDENTAL OR CONSEQUENTIAL DAMAGES ARISING OUT OF THE USE OR INABILITY TO USE THE PROGRAM (INCLUDING BUT NOT LIMITED TO LOSS OF DATA OR DATA BEING RENDERED INACCURATE OR LOSSES SUSTAINED BY YOU OR THIRD PARTIES OR A FAILURE OF THE PROGRAM TO OPERATE WITH ANY OTHER PROGRAMS), EVEN IF SUCH HOLDER OR OTHER PARTY HAS BEEN ADVISED OF THE POSSIBILITY OF SUCH DAMAGES.